



**Moorestown Theater Company**  
 Season # 19                      Production #194

**Presents Our Fourth 'Holiday Stage' Musical**



**The Musical**



**Dec. 5, 2021 · 6 PM**  
**Dec. 7, 2021 · 7 PM**  
**Dec. 9, 2021 · 7 PM**

**Dec. 10, 2021 · 7 PM**  
**Dec. 11, 2021 · 2 PM**  
**Dec. 12, 2021 · 3 PM**

**Our Lady Of Perpetual Help Church**  
**236 E. Main Street · Maple Shade, NJ 08052**

*Transforming Lives Since 2003!*



**Season Partner**



*The Horizon Foundation for New Jersey*



## Coming Attractions

---



### Performing Arts Classes & Private Lessons

Our Winter / Spring Session Of  
Classes Will Begin In January  
'22, And We're Bringing Back  
Our Spring Recital! Registra-  
tion Information Coming Soon!

---

## 2022 Will Be MTC's 20th Anniversary Season!

**“The 12 Days Of MTC” Begins December  
13th On Facebook (When We Will  
Announce Our 2022 Shows);  
Also, Look For ‘Early-Bird’ Pricing For Summer  
Stage ‘22 Coming Later This Month!**

**And Join Our E-Mail List To Get All MTC Info!!!**

---

**Stop In During The Holidays & See Our  
Performing Arts Studio at 5 West Main Street!**



**MoorestownTheaterCompany.org.  
info@MoorestownTheaterCompany.org • (856)778-8357**

---

**MOORESTOWN THEATER COMPANY, INC**

**Presents Our Fourth 'Holiday Stage' Musical**



Book By

**THOMAS MEEHAN & BOB MARTIN**

Music By

**MATTHEW SKLAR**

Lyrics By

**CHAD BEGUELIN**

Based on the New Line Cinema Film written by **David Berenbaum**

Originally produced by Warner Bros. Theatre Ventures  
in association with Unique Features

*Elf* opened at the AI Hirschfeld Theatre on Nov. 14, 2010 and ran for 57 performances, closing on Jan. 2, 2011. It opened again at the same theatre on Nov. 9, 2012 and ran for 74 shows, closing on Jan. 6, 2013.

Director

**MARK MORGAN**

Vocal Director & Costume Designer

**CAROL ANN MURRAY**

Choreographer

**JEN SELMAN**

Technical Director

**JACK MORGAN**

Assistant Producer

**ANNETTE DE ROSA**

Producers

**MARK MORGAN & CAROL ANN MURRAY**

Dec. 5, 2021 • 6 PM

Dec. 7, 2021 • 7 PM

Dec. 9, 2021 • 7 PM

Dec. 10, 2021 • 7 PM

Dec. 11, 2021 • 2 PM

Dec. 12, 2021 • 3 PM

**Our Lady Of Perpetual Help Church  
236 E. Main Street • Maple Shade, NJ 08052**



***Elf The Musical***

Is presented through special arrangement with Music Theatre International (MTI).

All authorized performance materials are also supplied by MTI.

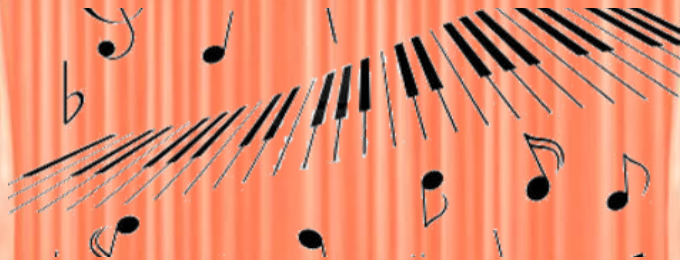
**www.mtishows.com**

**MTC 2021 Season Partner**



*The Horizon Foundation for New Jersey*

**Moorestown  
Theater Company**  
Thanks  
*The Horizon Foundation for New Jersey*  
for being our  
**2021 Season Partner.**



## Table Of Contents

<u>Item</u>	<u>Page</u>
<b>MTC</b> Fall Season Productions.....	Front Inside Cover
Title Page .....	3
<b>MTC</b> 2021 Season Partner: <b>The Horizon Foundation for New Jersey</b> .....	4
Table Of Contents & <b>MTC</b> Mission Statement .....	5
<b>MTC</b> Board Of Trustees .....	7
From Producing Artistic Director <b>Mark Morgan</b> .....	8
<b>MTC</b> Staff & Memberships .....	8
<b>MTC</b> History: Productions, Sites, Staffs, & Casts.....	9 - 12
<b>MTC</b> History: Key for Productions .....	12
<b>MTC</b> History: Programs & Performances .....	13
The Story .....	14 & 15
From The Director.....	16
The Production Staff & <b>MTC</b> Theme Song and Lyrics.....	17
The Company .....	18
The Scenes & Songs .....	19
What Is JTF? & <b>MTC's</b> JTF Productions.....	20
JTF "Best Of" Performance Awards.....	21
JTF '21 "Excellence In Acting" Award .....	22
Cast Bios .....	23, 25 - 30
<b>MTC</b> Costume Shop Rentals .....	24
<b>MTC</b> Staff Bios.....	31 - 33
The <b>MTC</b> & <b>Tina Fey</b> Connection.....	32
The <b>MTC</b> & <b>Kevin Chamberlain</b> Connection.....	33
Best Of Awards.....	Back Inside Cover
<b>MTC</b> 2021 Season .....	Back Outside Cover

---

## MTC Mission Statement

The mission of the **Moorestown Theater Company, Inc. (MTC)**, a non-profit, 501(c)(3), inclusive, equal-opportunity community theater organization incorporated in the state of New Jersey on **March 31, 2003**, is to:

- promote the opportunity for people of all ages, and especially families, to have fun participating in theater together;
- provide education and training to young people interested in pursuing theatrical professions;
- provide orderly, progressive, and purposeful leadership for teaching fundamental skills and techniques in all theatrical disciplines;
- 
- promote the theater experience by attending local, regional (Philadelphia), and national (New York) productions.

**MTC 2021 Season Advertiser**

Morrone  
Kaye & Yucha



---

o r t h o d o n t i c s

**Best of luck to all  
performers this  
season!!**

99 W. Main Street  
Moorestown, NJ 08057  
856.234.4044

120 Madison Ave. Ste. F  
Mount Holly, NJ 08060  
609.267.1221

---

[www.mkyortho.com](http://www.mkyortho.com)

## MTC Board Of Trustees

(Year listed is when Board Term ends. \* Indicates Founding Trustee.)

### Executive Committee



**Beverly Bennett** ('21 \*)  
Retired Assistant  
Choral Director  
Woodbury HS



**Annette De Rosa** ('21)  
Office Manager  
Delco Development  
**MTC Secretary**



**Tom McHale** ('21)  
Sr. Vice President  
PNC Investments  
**MTC Vice Chairperson**



**Mark Morgan** ('21 \*)  
Producing Artistic Director  
**Moorestown  
Theater Company**



**Carol Ann Murray** ('21 \*)  
Managing Director  
**Moorestown  
Theater Company**



**Mark Pinzur** ('21)  
Math  
Consultant  
**MTC Chairperson**



**Chris Resavy** ('21)  
Owner  
Mangold Lawn and  
Landscaping, Inc.

### Advisory Committee



**Taylor Adair** ('21)  
Director Of Enterprise Solutions  
Miles Technology



**Ann Baiada** ('21)  
Director  
Bayada Home Health Care



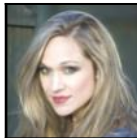
**Kimberly Bunn, AIA** ('22)  
Principal  
Bunn Architecture



**Kelly A. Dugan, Esq.** ('22)  
Co-Chair, Real Estate Dept.



**Brian Gardiner, CSM** ('22)  
Manager  
Cherry Hill Mall, LLC



**Jennifer Morris Grasso** ('22)  
**MTC Dance Teacher  
& Choreographer**



**Langston Lynch** ('22)  
Marketing Strategist & Social Media Mgr.  
Environmental Safety Management Corp.



**John Mattiacci, Esq.** ('22)  
Owner  
Mattiacci Law, LLC



**Hon. Troy Singleton** ('21)  
NJ State Senator  
7th Legislative District



**Rick Williams** ('22)  
News Anchor & Reporter  
*Channel 6abc*

### Emeritus Trustees

**Marianne Aleardi** (*SJ Magazine*)  
**Joseph Aristone** (PA Real Estate Investment Trust)  
**Rev. René Colson Hudson** (Riverview Estates)  
**John Comegno, II Esq.** (Comegno Law Group)  
**Caren Hosansky** (Liberty Property Trust)  
**Gordon Hudson** (The Barclay Group)  
**Kristi Howell** (Burlington Co. Regional Chamber Of Commerce)  
**Chris Konzelmann, Esq.** (White and Williams, LLP)  
**+Dennis Marks** (Retired, Sir Speedy Printing & Marketing)  
**Joe Morgan** (Unisys Corporation)

**+Mike Pruitt** (Eastern Lift Truck Company, Inc.)  
**Kevin Randall, EA** (Loftus Associates, **MTC Treasurer**)  
**Doug Schaeffer** (Woodforest National Bank)  
**Steve Solomon** (Upstage Right Productions)  
**Stephen Szymank** (Mercer General Works)  
**Thom Sirkot** (Bloomsburg Theatre Ensemble)  
**Kaitlin Tumulty** (Fourth Grade Teacher, Magowan ES)  
**Roberta Wallace** (Wallace Associates)  
**David Weinstein** (Archer & Greiner, PC)  
**+ Deceased Member**

---

## From Producing Artistic Director Mark Morgan

Hi **Moorestown Theater Company** Family & Friends,



Welcome to the 13th LIVE show in our 2021 Season! If this is your first time at **MTC**, welcome, thank you for 'surviving' with us, and we hope you can come back often to see our productions! (**MTC** has performed 19 LIVE musicals during the pandemic since June 2020!)

If you like this show, please tell a friend, and better yet, 'like' our Facebook page, and give us a 'rave review' on FB or Yelp! Check out our FB page once ***Elf The Musical*** ends to learn the titles of the shows we will be doing in our 20h Season in 2022, and / or you can join our Email List to see these titles. We also hope you and your Family will join us onstage in a show or a class in 2022!

Thanks for supporting **MTC** (especially if you voted for our four most recent 'Best Of Awards for 2020 on the back inside cover, and enjoy the show!!

---

### **MTC Staff**

Producing Artistic Director & Founding Trustee ..... Mark Morgan  
Managing Director & Founding Trustee ..... Carol Ann Murray  
Music Director & Founding Trustee..... Beverly Bennett  
Administrative Assistant, Box Office Manager, & Trustee..... Annette De Rosa  
Set Transportation Manager & Trustee ..... Chris Resavy  
Choreographer & Trustee ..... Jennifer Morris Grasso  
Technical Consultant & Trustee ..... Taylor Adair  
Technical Director & Creative Director ..... Jack Morgan  
Bookkeeper..... Chaz Krebs  
Vocal Director & Marketing Consultant ..... Kristin Li  
Dance Director ..... Jody Haggerty  
Hair / Wigs Designer ..... Bridget Gionta  
JTF Travel Coordinator ..... Stacy Coggan (Vacations By Stacy)

---

### **MTC Memberships**

The **Moorestown Theater Company** is a proud member of the:  
American Association of Community Theater (AACT), iTheatrics,  
NJ Association of Community Theater (NJACT),  
NJ Theater League (NJTL),  
ArtPride New Jersey / Discover Jersey Arts (DJA),  
South Jersey Cultural Alliance (SJCA),  
Visit South Jersey (VSJ), South Jersey Theatre League (SJTL),  
Burlington County Regional Chamber of Commerce (BCRCC),  
Moorestown Business Association (MBA),  
Moorestown Creates! (MC), & ENGAGE Moorestown (Moorestown NPOs).

---

**MoorestownTheaterCompany.org**

**Info@MoorestownTheaterCompany.org • 856 / 778-8357**  
**Performing Arts Studio: 5 W. Main Street • Moorestown, NJ 08057**

---



# MTC History: Productions, Sites, Staffs, & Casts

Season	No.	Month / Year	St.	Title	Perf.	Site	Dir.	VD	Ch.	Cast #
<b>1st</b>	01	July 2003	MS	<i>Annie</i> <sup>1</sup>	08	MFS	MM	MP	MKR	90 / 90
<b>2nd</b> (03 Shows)	02	Jan. 2004	BC	<i>A Broadway Romance</i> <sup>2</sup>	01	MCH	MM	BB	CAM	20
	03	July	MS	<i>Footloose</i> <sup>3</sup>	08	MFS	MM	MP	MKR	83
<b>Shows</b>	04	Oct.	BC	<i>A Broadway Travelogue</i> <sup>2</sup>	2/11/19	MCH	MM	CAM	CAM	19 / 122
	05	Feb. 2005	BC	<i>A Broadway Romance II</i> <sup>2</sup>	02	MCH	MM	CAM	CAM	31
<b>Shows</b>	06	July	MS	<i>Oklahoma!</i> <sup>1</sup>	08	MFS	MM	MP	MKR	71
	07	Oct.	BC	<i>A Broadway Timepiece</i> <sup>2</sup>	2/12/31	MCH	MM	CAM	CAM	23 / 125
<b>4th</b> (05 Shows)	08	Feb. 2006	BC	<i>A Broadway Romance III</i> <sup>2</sup>	02	MCH	MM	CAM	CAM	18
	09	July	MS	<i>Crazy For You</i> <sup>3</sup>	08	MFS	MM	MP	MKR	60
	10	July	SS I	<i>Honk!, Jr.</i> <sup>3</sup>	03	FBC	JS	JD	KT	26
	11	Aug.	SS II	<i>Once On This Island, Jr.</i> <sup>2</sup>	04	FBC	EW	JD	MKR	32
<b>Shows</b>	12	Oct.	BC	<i>A Broadway Namesake</i> <sup>2</sup>	2/19/50	MCH	MM	CAM	JLG	18 / 154
	13	Feb. 2007	BC	<i>A Broadway Romance IV</i> <sup>2</sup>	02	MCH	MM	CAM	JLG	22
	14	July	MS	<i>The Wizard Of Oz</i> <sup>1</sup>	08	WAMS	MM	MP	JLG	75
	15	July	SS I	<i>Disney's The Jungle Book, Kids</i>	05	FBC	EW	RL	KT	46
<b>Shows</b>	16	Aug.	SS II	<i>Schoolhouse Rock Live!, Jr.</i> <sup>2</sup>	05	FBC	JS	RL	CG	52
	17	Oct.	BC	<i>A Broadway Ego</i> <sup>2</sup>	2/22/72	MCH	MM	CAM	JLG	21 / 216
	18	Feb. 2008	BC	<i>A Broadway Romance V</i> <sup>2</sup>	02	MCH	MM	CAM	JLG	26
	19	June	SS I	<i>Disney's H. S. Musical (One-Act)</i> <sup>2</sup>	06	OLGC	MM	RL/MW	KT/EW	87
<b>Shows</b>	20	July	MS	<i>The King And I</i> <sup>1</sup>	10	WAMS	MM	MP	EW	61
	21	July	SS II	<i>Disney's 101 Dalmatians, Kids</i>	05	OLGC	MD	MW	KT	60
	22	Aug.	SS III	<i>Disney's Mulan, Jr.</i> <sup>3</sup>	06	OLGC	AF	RL	EW	46
	23	Oct.	BC	<i>A Broadway Ego II</i> <sup>2</sup>	02	MCH	MM	CAM	LB/KT	22
	24	Dec.	FS	<i>Annie, Jr.</i> <sup>1</sup>	6/37/109	HCC	MM	CAM	KT	78 / 380
	25	Feb. 2009	WS	<i>Disney's Sleeping Beauty, Kids &amp; PS-A</i> <sup>2</sup>	06	HCC	MM	CAM	RS	48
	26	May	SR	<i>Spring Studio Recital '09</i>	01	HCC	MM	CAM	CG/RS/KT	28
<b>Shows</b>	27	July	SS I	<i>Thoroughly Modern Millie, Jr.</i> <sup>3</sup>	06	HCC	AF	RL	KT	49
	28	July	MS	<i>Disney's Beauty And The Beast</i> <sup>1</sup>	08	WAMS	MM	MP	RCL	83
	29	July	SS II	<i>Seussical, Jr.</i> <sup>2</sup>	06	HCC	MD	MW	LD	47
	30	Aug.	SS III	<i>Disney's H. S. Musical 2</i> <sup>3</sup>	06	HCC	MD/AF	RL/MW	LD/KT	98
	31	Oct.	EG	<i>Extra-Gala I</i> <sup>2</sup>	01	LCCC	MM	CAM	---	11
	32	Dec.	SR	<i>Fall Studio Recital '09</i>	01	HCC	MM	CAM	LB/KM	36
	33	Dec.	FS	<i>A Christmas Carol: The Musical</i> <sup>3</sup>	6/41/150	HCC	MM	CAM	KT	69 / 469
<b>8th</b> (10 Shows)	34	Feb. 2010	WS	<i>G2K...Cinderella &amp; PS-A</i> <sup>2</sup>	06	HCC	MM	CAM	RS	61
	35	May	SR	<i>Spring Studio Recital '10</i>	01	HCC	MM	CAM	KM	23
	36	July	SS I	<i>Disney's Beauty And The Beast, Jr.</i> <sup>2</sup>	06	HCC	AF	RL	KT	51
	37	July	MS	<i>The Music Man</i>	08	WAMS	MM	MP	RCL	61
	38	July	SS II	<i>G2K...Oklahoma!</i>	06	HCC	LD	MW	RS	37
	39	Aug.	SS III	<i>Disney's Camp Rock: The Musical</i> <sup>6A</sup>	06	HCC	MM	LMP	KM/RS/KT	56
	40	Oct.	EG	<i>Extra-Gala II</i> <sup>2</sup>	01	RCC	MM	CAM	---	13
	41	Nov.	2S	<i>Guys And Dolls</i> <sup>1</sup>	06	HCC	MM	MP	RCL	34
	42	Dec.	SR	<i>Fall Studio Recital '10</i>	01	HCC	MM	CAM	KM	24
	43	Dec.	FS	<i>Annie, Jr.</i>	8/49/199	HCC	AF	JD	KM	71 / 431
<b>9th</b> (09 Shows)	44	Feb. 2011	WS	<i>G2K...Once Upon A Mattress &amp; PS-A</i> <sup>2</sup>	06	HCC	MM	CAM	LP	38
	45	May	SR	<i>Spring Studio Recital '11</i>	01	HCC	MM	CAM	KM	27
	46	July	SS I	<i>Bye, Bye Birdie (One-Act)</i>	06	HCC	LD	MP	EW	36
	47	July	MS	<i>Chitty Chitty Bang Bang</i> <sup>4</sup>	08	WAMS	MM	MP	LD/LMP	74
	48	July	SS II	<i>Disney's Aladdin, Jr.</i>	06	HCC	FR	RL	KT	67
	49	Aug.	SS III	<i>The Wizard Of Oz (One-Act)</i>	06	HCC	MD	RL/MR	RS	81
	50	Oct.	EG	<i>Extra-Gala III</i> <sup>2</sup>	01	LCCC	MM	CAM	---	16
	51	Nov.	2S	<i>South Pacific</i> <sup>2</sup>	06	UES	MM	MP	LMP	36
	52	Dec.	FS	<i>The Sound Of Music</i> <sup>2</sup>	8/48/247	UES	FR	JD	KT	80 / 455
<b>10th</b> (12 Shows)	53	Mar. 2012	WS	<i>Rapunzel &amp; PS-A</i> <sup>3</sup>	06	HCC	MM	CAM	LP	27
	54	Apr.	CS	<i>Thoroughly Modern Millie, Jr.</i>	02	OLGC	MM	CAM	KT	49
	55	Apr.	SR	<i>Spring Studio Recital '12</i>	01	HCC	MM	LMP	KM	25
	56	May	1S	<i>Disney's The Jungle Book, Kids</i>	04	HCC	MM	CAM	GA	36
	57	July	SS I	<i>Disney's The Little Mermaid, Jr.</i> <sup>6A</sup>	06	HCC	MM	CAM	KT	61
	58	July	MS	<i>Footloose</i>	08	WAMS	MM	MP	MKR	73
	59	Aug.	SS II	<i>The Music Man, Jr.</i>	06	HCC	FR	MR	RS	43
	60	Aug.	SS III	<i>Into The Woods, Jr.</i> <sup>2</sup>	06	HCC	FR	LMP	EW	21
	61	Aug.	SS IV	<i>Disney's Winnie The Pooh, Kids</i> <sup>3</sup>	06	HCC	AB	TP	KT	51
	62	Oct.	EG	<i>Extra-Gala IV</i> <sup>2</sup>	01	RCC	MM	CAM	---	11
	63	Nov.	2S	<i>42nd Street</i> <sup>1</sup>	06	UES	MM	MP	TBO	42
	64	Nov.-Dec.	FS	<i>Annie Warbucks</i> <sup>4</sup>	8/60/307	UES	MM	CAM	GA	42 / 481

Performances: Show / Season / Total

Cast: Per Show / Season

**MTC History: Productions, Sites, Staffs, & Casts**

Season	No.	Month/Year	St.	Title	Perf.	Site	Dir.	VD	Ch.	Cast #
11th (15 Shows)	65	Jan. 2013	JTF	<i>Disney's The Little Mermaid, Jr.</i>	01	CGC	MM	CAM	KT	24
	66	Mar.	WS	<i>Disney's Cinderella, Kids &amp; PS-A</i> <sup>2</sup>	04	HCC	GA	JD	KM	30
	67	Apr.	CS	<i>Disney's Beauty And The Beast, Jr.</i>	02	OLGC	MM	CAM	KM/KT	53
	68	May	1S	<i>Disney's 101 Dalmatians, Kids</i>	04	HCC	AD	CAM	KM	43
	69	May.	SR	<i>Spring Studio Recital '13</i>	01	HCC	MM	LMP	KM/TBO	40
	70	July	SS I	<i>Guys And Dolls, Jr.</i>	06	HCC	MD	JD	RS	45
	71	July	MS	<i>Bye Bye Birdie</i>	08	WAMS	MM	MP	JH	75
	72	July - Aug.	SS II	<i>Disney's Peter Pan, Jr.</i> <sup>4</sup>	06	HCC	FR	AC	KT	71
	73	Aug.	SS III	<i>Fame, Jr.</i> <sup>3</sup>	06	HCC	FR	AC	EW	28
	74	Aug.	SS IV	<i>Disney's The Aristocats, Kids</i>	06	HCC	MD	JD	RS	71
	75	Sept.	AS	<i>Scenes &amp; Songs</i> <sup>2</sup>	03	FP3	TM	Various		37
	76	Oct.	EG	<i>Extrava-Gala V</i> <sup>2</sup>	01	LCCC	MM	CAM	- - -	23
	77	Nov.	QS	<i>Disney's The Jungle Book, Kids</i>	02	WFS	MM	CAM	ABD	21
	78	Nov.	2S	<i>Thoroughly Modern Millie</i>	06	UES	MM	MP	TBO	45
	79	Dec.	FS	<i>Willy Wonka, Jr.</i> <sup>2</sup>	8/64/371	UES	MM	CAM	KT	81 / 687
12th (16 Shows)	80	Jan. 2014	JTF	<i>Willy Wonka, Jr.</i>	01	CGC	MM	CAM	KT	24
	81	Mar.	WS	<i>Disney's Mulan Jr. &amp; PS-A</i> <sup>2</sup>	04	HCC	MM	CAM	KM	48
	82	Apr.	CS	<i>The Wizard Of Oz, YPE</i> <sup>2</sup>	02	OLGC	MM	CAM	KM	52
	83	May	SR	<i>Spring Studio Recital '14</i>	01	HCC	MM	LMP	KM/TBO	37
	84	May	1S	<i>Disney's Winnie The Pooh, Kids</i>	04	HCC	MD	CAM	RS	38
	85	July	SS I	<i>Annie, Jr.</i>	06	HCC	LD	JG	RS	72
	86	July	MS	<i>Fiddler On The Roof</i> <sup>1</sup>	09	WAMS	MM	MP	JH	69
	87	July - Aug.	SS II	<i>Disney's My Son Pinocchio, Jr.</i> <sup>3</sup>	06	HCC	MM	CAM	KM	62
	88	Aug.	SS III	<i>Grease, School Edition</i>	06	HCC	MD	JB	JT	47
	89	Aug.	SS IV	<i>A Year With Frog &amp; Toad, Kids</i> <sup>3</sup>	06	HCC	FR	MSM	LB	40
	90	Sept.	AS	<i>Scenes &amp; Songs II</i> <sup>2</sup>	06	WFS	TM	Various		41
	91	Oct.	EG	<i>Extrava-Gala VI</i> <sup>2</sup>	01	LCCC	MM	CAM	KT	25
	92	Nov.	QS	<i>Disney's 101 Dalmatians, Kids</i>	02	WFS	MM	JG	LB	28
	93	Nov.	2S	<i>Anything Goes</i> <sup>1</sup>	06	UES	MM	MP	JH	40
	94	Dec.	FS	<i>Elf The Musical, Jr.</i> <sup>6^</sup>	08	UES	MM	CAM	RS	59
95	Dec.	PS	<i>Magic Tree House: A Ghost Tale For Mr. Dickens, Jr.</i> <sup>1^</sup>	3/71/442	UES	MM	CAM	KT	47 / 729	
13th (14 Shows)	96	Jan. 2015	JTF	<i>Disney's My Son Pinocchio, Jr.</i>	01	CGC	MM	CAM	JM	21
	97	Mar.	WS	<i>Disney's Aladdin, Kids &amp; PS-A</i> <sup>2</sup>	04	WAMS	MM	CAM	JH	51
	98	Apr.	CS	<i>Disney's The Little Mermaid, Jr.</i>	02	OLGC	MM	CAM	KM	45
	99	May	SR	<i>Spring Studio Recital '15</i>	01	HCC	MM	JG/CAM	JH	34
	100	May	1S	<i>Disney's Sleeping Beauty, Kids</i>	04	HCC	AD	DB	RS	34
	101	July	SS I	<i>Disney's The Lion King, Jr.</i> <sup>5</sup>	08	HCC	MM	JG	JM	96
	102	July	MS	<i>Mary Poppins</i> <sup>2</sup>	08	WAMS	MM	MP	JH	71
	103	July	SS II	<i>Seussical, Jr.</i>	06	HCC	FR	KK	LB	62
	104	Aug.	SS III	<i>Legally Blonde, Jr.</i> <sup>2</sup>	06	HCC	FR	JG	KT	39
	105	Aug.	SS IV	<i>Broadway Kids</i> <sup>2</sup>	06	HCC	AD/MM	KK/MSM	LB/JM	29
	106	Oct.	EG	<i>Extrava-Gala VII</i> <sup>2</sup>	01	RCC	MM	CAM	---	51
	107	Nov.	QS	<i>Disney's Winnie The Pooh, Kids</i>	02	WFS	AD	KK	LB	23
	108	Nov.	2S	<i>The Pajama Game</i> <sup>1</sup>	06	UES	MM	MP	KG	28
	109	Dec.	FS	<i>Shrek The Musical, Jr.</i> <sup>2</sup>	8/63/505	UES	MM	CAM	KT	64 / 648
	14th (14 Shows)	110	Jan. 2016	JTF	<i>Shrek, Jr.</i>	01	CGC	MM	CAM	KT
111		Mar.	WS	<i>Disney's Peter Pan, Jr.</i>	04	WAMS	MM	CAM	LB	68
112		Apr.	CS	<i>Disney's The Lion King, Jr.</i>	04	OLGC	MM	CAM	KM	41
113		May	SpS	<i>Disney's Mary Poppins, Jr.</i> <sup>5^</sup>	04	WAMS	MM	CAM	KM/KT	55
114		May	SR	<i>Spring Studio Recital '16</i>	01	HCC	MM	JG/CAM	JH/KM	46
115		July	SS I	<i>G2K... The Sound Of Music</i> <sup>2</sup>	06	HCC	MD	KK	JM	83
116		July	MS	<i>Disney's The Little Mermaid</i> <sup>4</sup>	08	HCC	MM	MP	JH	52
117		Aug.	SS II	<i>Disney's Alice In Wonderland, Jr.</i>	06	HCC	JG	KK	LB	44
118		Aug.	SS III	<i>Les Miserables: School Edition</i> <sup>2</sup>	08	HCC	MM	JG/CAM	KT	52
119		Aug.	SS IV	<i>Broadway Kids II</i> <sup>2</sup>	06	HCC	AD	KK	LB/JM	49
120		Aug.	AS	<i>Scenes &amp; Songs III</i> <sup>2</sup>	05	WFS	TM	Various		49
121		Oct.	EG	<i>Extrava-Gala VIII</i> <sup>2</sup>	01	RCC	MM	CAM	None	20
122		Nov.	TS	<i>Les Miserables: School Edition</i>	06	WAMS	MM	CAM	JH	47
123		Dec.	HS	<i>A Christmas Carol</i>	8/68/573	WAMS	MM	MP	JH	55 / 687

Performances: Show / Season / Total

Cast: Show / Season

**MTC History: Productions, Sites, Staffs, & Casts**

Season	No.	Month/Year	St.	Title	Perf.	Site	Dir.	VD	Ch.	Cast #	
<b>15th</b> (17 Shows)	124	Jan. 2017	JTF	<i>Disney's Peter Pan, Jr.</i>	01	CGC	MM	CAM	LB	29	
	125	Feb.	QS	<i>A Year With Frog And Toad, Kids</i>	02	WFS	AD/MM	TS	CC	19	
	126	Mar.	WS	<i>Hairspray, Jr.</i> <sup>2</sup>	06	WAMS	MM	CAM	KT	99*	
	127	Mar-Apr.	CS	<i>Shrek The Musical, Jr.</i>	04	OLGC	MM	CAM	KM	45	
	128	Apr.	EF	<i>Hairspray, Jr.</i>	01	WDL	MM	CAM	KT	36	
	129	May	SR	<i>Spring Studio Recital '17</i>	01	WAMS	MM	CAM	JH	38	
	130	May	SpS	<i>13 The Musical</i> <sup>2</sup>	04	WAMS	MM	CAM	JMG	48	
	131	July	SS I	<i>Disney's High School Musical, Jr.</i>	06	HCC	MD	JM	JM	75	
	132	July	MS	<i>The Wizard Of Oz</i>	10	HCC	MM	MP	JH	64	
	133	Aug.	SS II	<i>Willy Wonka, Jr.</i>	06	HCC	ES	JG/JM	JMG	60	
	134	Aug.	SS III	<i>West Side Story, School Edition</i> <sup>6 A</sup>	06	HCC	MM	CAM	JMG / KT	64	
	135	Aug.	SS IV	<i>Broadway Kids III</i> <sup>2</sup>	06	HCC	AD	KK / JM	JM / OW	51	
	136	Sep.	EG	<i>Extrava-Gala IX</i> <sup>2</sup>	01	TM	MM/ES	CAM/JG	JH/JMG	41	
	137	Oct.	AS	<i>Scenes &amp; Songs IV</i> <sup>2</sup>	04	WFS	TM	Various	Various	45	
138	Nov.	TS	<i>West Side Story, School Edition</i>	04	WFS	MM	CAM	JMG	29		
139	Dec.	FS	<i>Elf The Musical, Jr.</i>	06	WAMS	MM	JG	KM / OW	55		
140	Dec.	ES	<i>SS: Holiday Spectacular</i> <sup>2</sup>	2 / 70	643	FBC	MM	CAM	JH	15/813	
<b>16th</b> (18 Shows)	141	Jan. 2018	JTF	<i>Hairspray, Jr.</i>	01	CGC	MM	CAM	KT	45	
	142	Jan.	JTF	<i>Willy Wonka, Jr.</i>	01	CGC	ES	JG	JMG	24	
	143	Mar.	WS	<i>Seussical, Kids &amp; Char. Sing-Along</i>	06	FBC	ES	TS	KT	47	
	144	Apr.	CS	<i>G2K...The Sound Of Music</i>	04	OLGC	MM	CAM	KM	43	
	145	May	SpS	<i>Disney's The Lion King, Jr.</i>	06	WAMS	MM	CAM	JH	78	
	146	May	SR	<i>Spring Studio Recital '18</i>	01	FBC	MM/ES	CAM	JH/OW	45	
	147	Jun.	ES	<i>Showstoppers Songs &amp; Scenes</i> <sup>2</sup>	01	FBC	MM	CAM	Various	16	
	148	July	SS I	<i>Magic Tree House: Pirates Past Noon, Kids</i> <sup>5</sup>	04	HCC	ES	JM	OW	17	
	149	July	SSII	<i>Disney's High School Musical 2, Jr.</i>	06	HCC	MF	GH	JMG/JM	52	
	150	July	MS	<i>Annie</i>	10	HCC	MM	MP	JH	70	
	151	Aug.	SS III	<i>Fiddler On The Roof, Jr.</i> <sup>2</sup>	06	HCC	MD	KK	JM	51	
	152	Aug.	SS IV	<i>Newsies</i>	06	HCC	MM	CAM	JMG	45	
	153	Aug.	SS V	<i>Broadway Kids IV</i> <sup>2</sup>	06	HCC	MF/ES	GH/KK	JM/OW	53	
	154	Sep.	EG	<i>Extrava-Gala X</i> <sup>2</sup>	01	RCC	MM	CAM	JMG	30	
	155	Nov.	AS	<i>Scenes &amp; Songs V</i> <sup>2</sup>	05	UES	TM	Various	Various	59	
	156	Nov.	FS	<i>Disney's The Jungle Book, Kids</i>	04	FBC	MM	CAM	KM	20	
	157	Dec.	HS	<i>A Christmas Story, The Musical</i> <sup>3</sup>	06	MHS	MM	MP	KN	49	
	158	Dec.	ES	<i>SS: Holiday Spectacular II</i> <sup>2</sup>	2 / 76	719	FBC	MM	CAM	JH	11 / 755
<b>17th</b> (15 Shows)	159	Jan. 2019	JTF	<i>Disney's The Lion King, Jr.</i>	01	CGC	MM	CAM	JH	32	
	160	Jan.	JTF	<i>Seussical, Kids.</i>	01	CGC	JMG	GH	KT	18	
	161	Mar.	WS	<i>Aladdin, Jr.</i>	06	FBC	MM	TS	JH	47	
	162	Mar.	CS	<i>Hairspray, Jr.</i>	04	OLGC	MM	CAM	KM	40	
	163	Apr.	2S	<i>Mamma Mia!</i> <sup>5</sup>	06	WAMS	MM	CAM	JMG	53	
	164	Jun.	SpS	<i>Once On This Island, Jr.</i>	06	WAMS	MM	CAM	JMG	68	
	165	July	SS I	<i>MTH: Knight At Dawn, Kids</i> <sup>5</sup>	04	HCC	ES	GH	JM	33	
	166	July	SSII	<i>Broadway Teens</i> <sup>2</sup>	06	HCC	MF	KK	JH	16	
	167	July	MS	<i>Disney's Beauty And The Beast</i>	08	HCC	MM	MP	JH	78	
	168	Aug.	SS III	<i>Guys And Dolls, Jr.</i>	06	HCC	MF	KK	JH	40	
	169	Aug.	SS IV	<i>G2K...Footloose</i> <sup>2</sup>	06	HCC	MM	CAM	KT	34	
	170	Aug.	SS V	<i>Broadway Kids V</i> <sup>2</sup>	06	HCC	GH	GH	DB / JH	46	
	171	Nov.	EG	<i>Extrava-Gala XI</i> <sup>2</sup>	01	CCB	MM	CAM	N/A	07	
172	Nov.	FS	<i>Winnie The Pooh, Kids</i>	04	PASEG	CM	AMP	JH	21		
173	Dec.	HS	<i>Frozen, Jr.</i>	6 / 71	790	WAMS	MM	CAM	JMG	68 / 601	
<b>18th</b> (8 Shows)	174	Jan. 2020	JTF	<i>Once On This Island, Jr.</i>	01	CGC	MM	CAM	JMG	30	
	175	June	CS	<i>Disney's High School Musical, Jr.</i>	02	OLGC	MM	CAM	GF	21	
	176	July	SS I	<i>The Big One-Oh! Jr.</i> <sup>5***</sup>	01	B/MTC	OT	MM	GTH	DB	10
	177	July	SS II	<i>Sister Act, Jr.</i>	01	B/MTC	OT	JH	AS	DB	20
	178	Aug.	RS	<i>Godspell</i>	02	B/MTC	OT	MM	CAM	JMG	24
	179	Aug.	SS III	<i>Dear Edwina, Jr.</i> <sup>3</sup>	01	B/MTC	OTAS	SF	IE	15	
	180	Nov.	RS	<i>The Addams Family</i> <sup>2</sup>	09	RCC	MM	GTH	DB	13	
	181	Dec.	VS	<i>Holiday Virtual Concert</i>	1 / 18	808	Online	MM	CAM	JH	25 / 158

\*\*\* = MTC's First All-Male Directing Team

Performances: Show / Season / Total

Cast: Show / Season

## MTC History: Productions, Sites, Staffs, & Casts

Season	No.	Month/Year	St.	Title	Perf.	Site	Dir.	VD	Ch.	Cast #
<b>19th</b>	182	Apr. 2021	WS	<i>Matilda, Jr.</i> <sup>2</sup>	04	B/MTC OT	MM	CAM	JMG	23
<b>(13 Shows)</b>	183	May	CS	<i>Disney's Aladdin, Jr.</i>	04	B/MTC OT	MM	CAM	CC	19
	184	Jun.	SpS	<i>Disney's Beauty And The Beast, Jr.</i>	04	B/MTC OT	MM	CAM	JH	28
	185	Jun.	JTF	<i>Disney's Beauty And The Beast, Jr.</i>	01	SFC	MM	CAM	JH	14
	186	Jun.-July	SS I	<i>Annie, Kids</i> <sup>2</sup>	04	B/MTC OT	JH	SF	CC	32
	187	July	SS II	<i>Legally Blonde, Jr.</i>	06	B/MTC OT	JH	AS	IE	36
	188	July	RS	<i>Footloose</i>	06	FPC	MM	KL	JT	24
	189	Aug.	SS III	<i>Oliver, Jr.</i> <sup>2</sup>	06	B/MTC OT	DB	LL	JH	26
	190	Aug.	MS	<i>Shrek, The Musical</i> <sup>***2</sup>	08	FPC	MM	MP	DB	42
	191	Aug.	SS IV	<i>School House Rock Live, Jr.</i>	06	B/MTC OT	JM	MEM	CC	20
	192	Oct.	FS	<i>Disney's Moana, Jr.</i> <sup>2</sup>	04	OLPH	MM	AMP	DB	37
	193	Nov.	AS	<i>MTI's All Together Now</i> <sup>7</sup>	04	OLPH	MM	CAM	DB & JH	33
	194	Dec.	HS	<i>Elf, The Musical</i> <sup>2</sup>	06 / 63 / 871	TBA	MM	CAM	JS	48 / 382

\* Largest MTC Cast (99 - *Hairspray, Jr.* - Winter Stage '17) Performances: Show / Season / Total Cast Members: Show / Season

**Totals: 194 Productions (thru HS '21) • 871 Performances (859 'Ticketed' + 11 JTF + 1 EF) • 8,383 Cast**

\*\*\* = MTC's Second All-Male Directing Team

## MTC History: Key For Productions

**Premieres / Frequencies (7 / 116):** <sup>7</sup> World (2) • <sup>6</sup> East Coast (4) • <sup>5</sup> Delaware Valley (6) • <sup>4</sup> Delaware Valley Community Theater (4) • <sup>3</sup> Burlington Co. Community Theater (13) • <sup>2</sup> Moorestown (74) • <sup>1</sup> Moorestown Community Theater (10) • <sup>^</sup> Pilot (6)

**Performance Sites / Frequencies (21 / 194):** B / MTC OT = Bayada / MTC Outdoor Theater (11) • CCB = Camden County Boathouse (1) • CGC = Cobb Galleria (GA) Center (10) • FBCT = First Baptist Church (11) • FPC = First Presbyterian Church (3) • HCC = Hope Community Church (70) • LCCC = Laurel Creek Country Club (4) • MCH = Moorestown Community House (10) • MFS = Moorestown Friends School (4) • MHS = Moorestown High School (2) • OL = On-Line (1) • OLGC = Our Lady of Good Council School (12) • OLPH = Our Lady of Perpetual Help Church (3) • PASEG = Performing Arts Studio East Gate (1) • RCC = Riverton Country Club (6) • SFC = Smart Financial (TX) Centre (1) • TM = The Mansion (1) • UES = Upper Elementary School (12) • WAMS = Wm. Allen Middle School (22) • WDL = Wilmington (DE) Drama League (1) • WFS = Westfield Friends School (8)

**'Rights' Companies / Frequencies (8 / 194):** CT = Concord Theatricals (1) • DP = Dramatic Publishing (1) • MTC = Moorestown Theater Company (48) • MTI = Music Theatre International (120, of which, 51 productions are of 24 different Disney Theatrical Productions) • R&H = Rodgers & Hammerstein (13) • SF = Samuel French (1) • T-W = Tams-Witmark (9) • TRW = Theatrical Rights Worldwide (1)

**Directors / Frequencies (20 / 194):** GA = Gina Amato (1) • DB = Dante Brattelli (1) • LD = Liz Daingerfield (3) • MD = Matt Dotzman (10.5) • AD = Ashley Durante (8) • MF = Mike Franz (4.5) • AF = Amanda Frederick (4.5) • JG = Jacqueline Gonzalez (1) • JMG = Jennifer Morris Grasso (1) • JH = Jody Haggerty (3) • GH = Gabby Horvitz (1) • CM = Corinne Main (1) • TM = Tom McHale (5) • JM = Jack Morgan (1) • MM = Mark Morgan (129.3) • FR = Frankie Rowles (9) • JS = Joe Sabatino (2) • AS = Abi Sanie (1) • ES = Erica Sirdashney (7.2) • EW = Emily Weitzel (2)

**Vocal Directors / Frequencies (26 / 194):** BB = Bev Bennett (1) • JB = Jaclyn Biancaniello (1) • DB = Deanna (Palermo) Bucci (1) • AC = Allison Canning (2) • JD = Josh Dowiak (7) • SF = Sophia Fortuna (2) • JG = Jacqueline Gonzalez (8.3) • GTH = Gareth T. Haynes (2) • GH = Gabby Horvitz (5.5) • KK = Katie Kershaw (9.5) • KL = Kristin Li (1) • RL = Ramon Licairac (7.5) • LL = Langston Lynch (1) • JM = Jessica Marcinkowski (3) • MEM = Madison Maiorini (1) • MSM = Melanie Mendel (1.5) • CAM = Carol Ann Murray (90.7) • LMP = Lauren Parsons (3.5) • AMP = Ashlan McMichael Petrillo (2) • TP = Tim Perry (1) • MP = Mark Pinzur (26) • MR = Megan Rozinski (2.5) • AS = Abi Sanie (2) • TS = Taylor Sternberg (3) • Various (5) • MW = Molly Wood (4)

**Choreographers / Frequencies (30 / 194):** GA = Gina Amato (2) • LB = Lizi Baldwin (9) • DB = Dante Brattelli (5.7) • CC = Casey Curcio (4) • LD = Liz Daingerfield (2) • ABD = Ashley Brimfield Durante (1) • IE = Indi Ebo (2) • GF = Gabby FitzPatrick (1) • JLG = Jaimie Lynn Geddes (5) • KG = Kelly Gillin (1) • CG = Caroline Gleeson (1.3) • JMG = Jennifer Morris Grasso (13.8) • JH = Jody Haggerty (27.6) • RCL = Renee Chambers Liciaga (3) • KM = Kelsey Marcoccia (18.8) • JM = Julia McHale (9) • CAM = Carol Ann Murray (5) • None (2) • TBO = Tamlyn Brooke Orlando (3) • KN = Kristen Nasuti (1) • LP = Laura Parise (2) • LMP = Lauren Parsons (1.5) • MKR = Megan Krebs Rodgers (6) • JS = Jen Selman (1) • RS = Rachel Smith (11.7) • JT = Jenny Torgerson (1) • KT = Kaitlin Tumulty (33) • Various (12) • EW = Emily Weitzel (5.5) • OW = Olivia West (3)

## MTC History: Programs & Performances

Stg. No.	Productions By Program	No.	Moorestown / Local 'Public' Performances
1S 004	First Stage Musicals	006	Family Fun Days
2S 007	Second Stage Musicals	011	Fourth Of July Parades (Since '08; Not In '14 & '20)
AS 006	Alternative Stage Productions	003	NJ Jr. Theater Celebrations (Cumberland & Mt. Laurel)
BC 010	Broadway Cabarets	010	Lions Club Holiday Parades
CS 010	Counsel Stage Musicals	011	MBA ArtWalks
EF 001	Eastern States Theater Assoc. Festival Performances	006	MBA Autumn In Moorestown Festivals
EG 011	Extrava-Gala Cabarets	010	MBA Candlelight Nights / Strolls
ES 003	Elite Stage (Showstoppers)	017	MBA Moorestown Days (Not Held in '20 or '21)
FS 012	Fall Stage Musicals	010	P&R / MBA Summer Concert Opening Acts
HS 004	Holiday Stage Musicals	001	Rita's Water Ice Previews
JTF 011	Jr. Theater Festival Performances	001	Riverton River Races Previews
MS 018	Main Stage Musicals	086	<b>Total Moorestown 'Public' Performances</b>
PS 001	Preview Stage (World Premiere Workshop)		(+ 16 'Private' Performances = 102 'Public' / 'Private' Performances)
RS 003	Rising Stage Musicals		
QS 004	Quaker Stage Drama Club Musicals	<b>No.</b>	<b>National Anthem Performances</b>
SpS 005	Spring Stage Musicals	003	Adult Soccer Comm. Thanksgiving Charity Game ('17-'19)
SS 057	Summer Stage Musicals	004	Moorestown Council Re-Org. Meetings ('09, '11, '17, & '19)
SR 012	Studio Recitals (10 Spring & 2 Fall)	006	Phillies Games (4-2: '07-W; '08-L; '10-W; '11-W; '14-L; '16-W)
TS 002	Teen Stage Musicals	001	Soul Game (1-0: '15-W)
VS 001	Virtual Stage Production	001	Thunder Game (1-0: '17-W)
WS 012	Winter Stage Musicals	001	Vietnam Wall Closing Ceremony (6.9.13)
194	<b>Total Productions (By Program)</b>	016	<b>Total National Anthem Performances (W-L: 6-2)</b>

## MTC 2021 Season Advertiser

Holman and our employees proudly support the Moorestown Theater Company, a local cultural icon!



*These are the people who make us.*

www.HolmanEnterprises.com

## The Story

### Act One

When he sits down to watch TV after his Christmas deliveries and realizes that the Temple - Penn State college football game he tried to TiVo has been recorded over, 'Santa' decides to tell the Christmas story of "Buddy The Elf".

Lights up on 'Buddy', an oversized elf, excitedly getting ready for another day's work in Santa's workshop ("Happy All The Time"). At work, 'Charlie', the shop manager, informs the Elves that they must work twice as hard this year because more and more humans no longer believe in Santa, and that 'Christmas Spirit' is what makes Santa's sleigh fly. Later, Charlie checks on Buddy's progress at making toys. As usual, he is way behind the others and feels terrible about it. Charlie asks him to take a break and, as he does, Buddy overhears a conversation in which Charlie reveals that Buddy is actually a human — Buddy's worst nightmare. Santa sits Buddy down and tells him the story of how he accidentally brought him back to the North Pole when Buddy's mother died. He tells Buddy that his father lives and works in New York City, but is on the "naughty list". Determined to save his father with Christmas Spirit, Buddy sets off for New York ("World's Greatest Dad").

When he arrives at the office of his father, 'Walter', in the Empire State Building, Buddy finds him ranting to his wife ('Emily') and son ('Michael') about Christmas being a complete annoyance ("In The Way"). Walter is stunned to hear Buddy's declaration that he is his son and calls security to take him away. They drop him at Macy's, where a manager mistakes him for an employee, sent down from the corporate office to check on things. As they decorate the store, all of the employees begrudge their overly happy new co-worker until they, too, catch Buddy's infectious Christmas Spirit ("SparkleJollyTwinkleJingley"). When everyone goes to leave for the night, Buddy asks 'Jovie', his favorite co-worker, on a date. She accepts. The next morning, a department store Santa arrives. Buddy accuses him of being a fake, and they fight. The police are called and they take Buddy to his father's apartment.

Emily and Michael are at home, trying in vain to build Michael's science project. Buddy agrees to help if they will, in turn, muster up some Christmas Spirit to write letters to Santa. They sit down to ask for the one thing they never get: some quality time with Walter ("I'll Believe In You"). Buddy fixes the science project to high-fives and hugs just as Walter walks in. Resistant at first, Emily talks him into allowing Buddy to stay the night. In the morning, a Fed-Ex man arrives with the results of a DNA test. When they first met, Emily plucked one of Buddy's hairs to send off for testing, and the results confirm that he is Walter's son ("In The Way – Reprise"). Buddy is elated, but Walter is not...especially since he must take Buddy with him to work so Emily can attend a meeting.

Newly clothed in a business suit, Buddy is excited to accompany Walter to work ("Just Like Him"). When Walter's boss comes in and threatens to fire him, Buddy's rambunctious curiosity and playfulness are not a welcome distraction. Later that night, Jovie and Buddy go on their date. At first, it isn't going well, but things soon turn around. Buddy promises to give Jovie a real Christmas, starting with a Christmas Eve dinner at Tavern on the Green like she's always dreamed ("A Christmas Song"). They kiss. Meanwhile, Walter is still at work and has just been given a manuscript for a children's story that could save his job. Buddy bursts in to tell Walter that he's in love and, while Walter talks with colleagues, Buddy decides to make "snow" by putting the manuscript through the shredder. With the manuscript destroyed, Walter explodes with anger and tells Buddy to get out of the apartment and his life ("World's Greatest Dad – Reprise").

## The Story (Continued)

### Act Two

The Santa from the beginning of the musical hurries back from intermission to take up the tale of "Buddy The Elf", once again.

Back at the apartment, Buddy leaves a note on an etch-a-sketch to apologize and say goodbye to Walter, Emily, and Michael. He then wanders NYC on until he ends up at a Chinese restaurant with several other now-out-of-work "Santas" and Salvation Army Bellingers on Christmas Eve. They complain about the state of Christmas and children these days ("Nobody Cares About Santa"). When they leave to return home to their families, Buddy remembers that he was supposed to go on another date with Jovie. Elsewhere, she waits in front of Tavern on the Green, upset that Buddy is two hours late ("Never Fall In Love [With An Elf]"). Buddy arrives, apologizes, and gives Jovie the snow globe that Santa gave him when he left the North Pole. Still upset, Jovie leaves.

When Emily and Michael find Buddy's note, they are deeply saddened. Emily tells Michael that, although she loves him, Buddy is crazy for believing in Santa at thirty years of age. Just then, Santa's sleigh flies through the sky and makes a renewed believer out of both of them ("There Is a Santa Claus"). They rush to Walter's office to tell him, finding him desperately trying to come up with an idea for a new children's book before his boss arrives to hear the pitch. The boss, 'Mr. Greenway', arrives and, as Walter begins his awful pitch, Buddy enters. As a present to Walter, Buddy gives Greenway 'The Story Of Buddy The Elf' ("The Story Of Buddy The Elf"). Greenway loves it, but he wants to change the elf to a horse...and he wants Walter to work on it all through Christmas Eve and the next day. Walter quits, having finally decided to spend time with his family, as Greenway storms out.

When Michael tells Buddy that they saw Santa's sleigh land, Buddy realizes that the sleigh has run out of the Christmas Spirit that allows it to run. They run to help, finding Santa sitting glumly beside his sled ("Nobody Cares About Santa – Reprise"). Buddy spots a television news reporter, 'Charlie' / 'Charlotte Dennon', and his / her camera crew nearby and grabs the microphone to beg all of New York to believe, sing, and spread Christmas Spirit so that Santa can fly again. Jovie arrives and is convinced, as other random New Yorkers join the movement ("A Christmas Song – Reprise") and Santa's sleigh again takes flight. Santa invites Buddy to return to the North Pole with him, but Buddy decides to stay, finally feeling like he belongs.

We transition back to the Santa that began both acts as he closes the storybook and goes to answer the knock at the door. In enters Michael, Emily, Walter, Buddy, Jovie...and their new baby, 'Buddy Hobbs', to celebrate Christmas as they now do every year ("Finale").

[www.mtishows.com](http://www.mtishows.com)

[MccreestownTheaterCompany.org](http://MccreestownTheaterCompany.org)



December 5, 7, 9, 10, 11, & 12, 2021

## From The Director

“Just sing a Christmas Song, It’s like magic if things go wrong,  
Just spread some Christmas Cheer, By singing loud for all to hear!

“A Christmas Song” from **Elf The Musical**  
Music by **Matthew Sklar** and Lyrics by **Chad Beguelin**

When you’re finishing up ‘Fun Week’ (which is what we at **MTC** call ‘Tech Week’ or ‘Hell Week’, as most theater people call the week of rehearsals leading up to ‘Opening Night’), these song lyrics and the feelings they generate (which come from the most generic holiday song title ever!) are very appropriate. All 48 Cast Members who are on-stage, along with the dozen or so Staff Members and Volunteers who are off-stage and back-stage, often are asking ourselves “Why are we doing this?” or “Why are we all out so late on school nights?” And things certainly do go wrong during ‘Fun Week’ (especially during a worldwide pandemic)! But then we hear these cheerful lyrics in these wonderful songs, and we can’t help but get smiles on our faces, and begin to feel that holiday spirit. And we hope that we can put you in the holiday spirit with this musical! So thank you from the bottom of our elfish hearts for squeezing this show into your December schedules! (And please think about having your children join us on-stage next year - we have several rookies in this year’s Cast!

As Moorestown’s only year-round community theater (with 19 LIVE musicals during the past 19 months during the pandemic!), **MTC** tries to fill the needs of our performers AND our audiences.

I have to thank some special people involved in **Elf The Musical**: Producer, Vocal Director, Conductor, Costume Manager, (and my wife) **Carol Ann Murray**, Assistant Conductor and Vaccine Card Checker (and my mother-in-law) **Beverly Bennett**, Assistant Producer, Ticket Manager, and Program Editor **Annette De Rosa**, Choreographer **Jen Selman** (in her choreography debut!), Asst. Vocal Director **Tim Herman**, Tech Director and Sound Designer (and my son) **Jack Morgan**, Sound Board and Sound Effects Operator **Mark Geisler**, Operator Lighting Board Operator **Brian Hehl**, Set Construction Manager **Chris Resavy**, Stage Manager **John Wells**, Props Manager **Amy Evangelisto**, Hair Designer **Bridget Gionta**, the rest of our Crew, our Cast, especially our Elected Officials who have come to ‘play’ with us, our Parent Volunteers, our Partners, Advertisers, and Donors, our Trustees, Families, and most of all, **YOU!**

Thanks for coming to **MTC's Elf The Musical** and for supporting the Arts in Burlington County, and please try to come see us often on 2022, which will be **MTC's** 20th Anniversary Season! Once **Elf The Musical** is over, we will announce a show title per day starting on Monday, December 13th when we begin “The Twelve Days Of **MTC**”. We also hope to have our list of Winter / Spring Studio Classes finalized in the next week or so, as well as ‘Early-Bird Registration’ for Summer Stage ‘22, and much more!

Trying To Be ‘The World’s Greatest Dad’ (and Director),

*Mark*

**Mark Morgan**, Director, **Elf The Musical**  
Producing Artistic Director, **Moorestown Theater Company**

P.S. Anyone have a building, land, or storage space that you could donate to **MTC**? Or can write a seven-figure check (that won’t bounce)? Or want to be a Production Partner for one of our upcoming shows? If so, see me after the show! Thanks for joining us!



## The Production Staff

Producing Artistic Director, Director, & Producer ..... Mark Morgan  
Managing Director, Vocal Director, & Producer ..... Carol Ann Murray  
Assistant Vocal Director ..... Tim Herman  
Choreographer ..... Jen Selman  
Technical Director & Sound Designer ..... Jack Morgan  
Sound Board and Sound Effects Operator ..... Mark Geisler  
Projections Operator ..... Morgan Riley  
Light Board Operator ..... Brian Hehl  
Spotlight Operators ..... Reilly Czop & Katie Mark  
Set Construction Manager ..... Chris Resavy  
Stage Manager ..... John Wells  
Stage Crew ..... Nick Hehl and Tyler Mark  
Properties Manager ..... Amy Evangelisto  
Costume Designer ..... Carol Ann Murray  
Assistants ..... Dante Brattelli, Jody Haggerty,  
Madison Kavalunas, Kaitlyn Resavy  
Hair Designer ..... Bridget Gionta  
Advertisements & House Managers.... Annette De Rosa & Mark Morgan  
Vaccine Card Checker ..... Beverly Bennett  
Photographer ..... Annette De Rosa  
Creative Director, Webmaster, & Video Editor ..... Jack Morgan  
Ticket Manager & Program Cover Designer ..... Annette De Rosa  
Program Editors ..... Annette De Rosa & Mark Morgan  
Communications Director ..... Mark Morgan

---

## MTC Theme Song & Lyrics

The **Mccrestown Theater Company** is very big on “traditions”. At the final performance of an **MTC Holiday Stage Musical** (on Sunday at 3 PM), all alumni / ae are invited to join the current cast on-stage before the show to sing our theme, “**Tomorrow**”.

**Annie** “Tomorrow” **Annie**

(From **MTC's** First All-Ages Main Stage Musical, **Annie**, in July 2003)

**Music By Charles Strouse • Lyrics By Martin Charnin**

The sun will come out, tomorrow, Bet your bottom dollar that tomorrow,  
There'll be sun, Just thinkin' about, tomorrow,  
Clears away the cobwebs and the sorrow, 'Til there's none.

When I'm stuck with the day that's gray and lonely  
I just stick out my chin and grin and say, ohhh

The sun will come out, tomorrow  
So you gotta hang on 'til tomorrow, Come what may...

Tomorrow, tomorrow, I love ya, tomorrow, You're only a day away  
Tomorrow, tomorrow, I love ya, tomorrow, You're only a day a-way!

**MTC's** Main Stage Theme Song is “Tomorrow”, from our first Main Stage Musical, **Annie** in July 2003.

**MTC's** Summer Stage Theme Song is “Warts And All”, from our first Summer Stage Musical, **Honk, Jr.** in July 2006.

---

# The Company

(In Order Of Appearance)

<u>'Black' Cast</u>	<u>'Gold' Cast</u>	<u>'Charlie / Charlotte Dennon'</u>
	Sun., 12.5, 6 PM (# 1)	Jake Van Dyken
	Tue., 12.7 PM (# 2)	Jill Fallows Macaluso
Thu., 12.9, 7 PM (# 3)		Quinton Law
	Fri., 12.10, 7 PM (# 4)	Cheryl Makopoulos
Sat., 12.11, 2 PM (# 5)		Nicole Gillespie
Sun., 12.12, 3 PM (# 6)		Mark Villanueva

## Both Casts

Santa Claus .....	Tim Herman
Mrs. Claus .....	Patricia Walz
Charlie (Elf #1)..... Addison Geisler..... Finn Vajapey	
Tiara (Elf #2)..... Giovanna Barcia..... Sophia Capprotti	
Buddy .....	William Reid..... Lamonte Jordan
Cathy (Elf #3)..... Cathy Tetrault	
Amanda (Elf #3)..... Amanda Fletcher	
Sam .....	Hannah Brodt
Walter Hobbs..... Steve Gionta..... Rick Williams	
Deb..... Alex Keith..... Jocelyn Williams	
Emily Hobbs .....	Andie Drechsler..... Stefanie Vajapey
Michael Hobbs..... Benjamin Selman..... Kai Vajapey	
Security Guard #1..... Lamonte Jordan..... William Reid	
Security Guard #2..... Robert Hagerty	
Saleswoman..... Emily Kiesling..... Marisa Rivera	
Macy's Store Manager..... Dan Drechsler	
Jovie..... Marisa Rivera..... Emily Kiesling	
Store Elf #1..... Cathy Tetrault	
Store Elf #2..... Amanda Fletcher	
'Fake' Santa..... Jim Guevara	
Mother..... Stefanie Vajapey..... Andie Drechsler	
Child..... Christopher Logar	
Policeman #1 (Vinny).... Lamonte Jordan..... William Reid	
Policeman #2 (Doug)..... Rob Hagerty	
Sarah..... Barbara Fletcher	
Mr. Greenway..... Mark Morgan	
Chadwick..... Gianna DiGiovanni	
Matthews..... Madison Kavalunas	
Salvation Army Bellringer..... Bridget Gionta	
Restaurant Waitress..... Cindy Kuo	
Charlotte Dennon..... Elected Officials Listed Above With Show Dates	
Man #1 (David Lambert)..... Rob Hagerty	
Woman #1 (Emma Van Brocklin)..... Barbara Fletcher	

**Fake Santas:** Dan Drechsler, Jim Guevara, Rob Hagerty, Tim Herman,  
Off-Buddy, Off-Walter

**Adult Chorus:** Hannah Brodt, Gianna DiGiovanni, Andie Drechsler,  
Dan Drechsler, Barbara Fletcher, Steve Gionta, Jim Guevara, Rob Hagerty,  
Tim Herman, Lamonte Jordan, Madison Kavalunas, Alex Keith, Emily Kiesling,  
Cindy Kuo, Carol Ann Murray, William Reid, Marisa Rivera,  
Stefanie Vajapey, Patricia Walz, Jocelyn Williams, Rick Williams

**Elf Chorus:** Giovanna Barcia, Sophia Capprotti, Audrey Eakins,  
Amanda Fletcher, Addison Geisler, Emmie Jubanyik, Sofia Krasnokutsky,  
Christopher Logar, Arnav Reddy, Nico Renna, Vasso Sarandoulas, Emily Seligman,  
Benjamin Selman, Caroline Selman, Peter Selman, Cathy Tetrault, Finn Vajapey,  
Kai Vajapey, Kenzie Ward

---

## The Scenes & Songs

Time & Place: The story takes place in the present day  
in the North Pole and New York City.

### Act I

- Prelude:** North Pole - Christmas Town, Early One Day
- Scene 1:** North Pole - Christmas Town, A Few Minutes Later  
"Happy All The Time" ..... Santa, Buddy, & North Pole Elves
- Scene 2:** North Pole - Christmas Town, A Few Minutes Later
- Scene 3:** North Pole - Christmas Town, Immediately Following  
"Not Happy All The Time" ..... Buddy
- Scene 4:** Christmas Town to Midtown Manhattan, Over A Few Days  
"World's Greatest Dad" ..... Buddy
- Scene 5:** The Greenway Press Office, Later That Day  
"In The Way" ..... Deb, Walter Hobbs, Emily Hobbs,  
Michael Hobbs, & Adult Ensemble
- Scene 6:** Macy's Christmas Department, Later That Day  
"Sparklejollytwinklejingley (Part 1)" ..... Buddy, Jovie, Macy's Store Manager,  
Macy's Employees, & Holiday Shoppers
- Scene 7:** The Hobbs' Living Room, Later That Night  
"I'll Believe In You" ..... Michael & Emily
- Scene 8:** The Hobbs' Living Room, The Next Day  
"In The Way (Reprise)" ..... Emily and Walter
- Scene 9:** Greenway Press Offices, Later That Morning  
"Just Like Him" ..... Buddy, Deb, & Adult Ensemble
- Scene 10:** Rockefeller Center, Later That Night  
"A Christmas Song" ..... Buddy, Jovie, & Full Company
- Scene 11:** The Greenway Press Office, The Next Day
- Scene 12:** Outside On The Streets Of NYC, Later That Night  
"World's Greatest Dad (Reprise)" ..... Buddy & Carolers

### Intermission

There will be a 15– to 20-minute intermission, where refreshments will be sold.

You can lower your face mask to eat and drink your refreshments.

There is no smoking anywhere on the OLPH grounds.

### Act II

- Prologue:** North Pole - Christmas Town
- Scene 12:** Chung Fu Palace, Christmas Eve  
"Nobody Cares About Santa" ..... Fake Santa, Other Fake Santas, Salvation Army  
Bellringers, Macy's Store Manager, & Buddy
- Scene 13:** – Tavern On The Green, Later on Christmas Eve  
"Never Fall In Love (With An Elf)" ..... Jovie
- Scene 14:** – The Hobbs' Living Room (& Other Bedrooms), Even Later On Christmas Eve  
"There Is A Santa Claus" ..... Michael, Emily, & Other New York Children
- Scene 15:** The Greenway Press Office, Still Later On Christmas Eve  
"The Story Of Buddy The Elf" ..... Buddy, Greenway, Walter, Deb, Chadwick,  
Matthews, Michael, Emily, & Adult Ensemble
- Scene 16:** The Woods Near The Central Park Boathouse, A Few Minutes Later  
"Nobody Cares About Santa (Reprise)" ..... Santa
- Scene 17:** Central Park West, Immediately Following  
"A Christmas Song (Reprise)" ..... Jovie, Buddy, Emily, Michael, Walter,  
Charlotte / Charlie, Santa, & Full Company
- Epilogue:** North Pole & NYC, One Year Later  
"Finale (Parts 1 and 2)" ..... Buddy, Jovie, Walter, Emily, Michael, Santa, Mrs. Claus,  
Greenway, Chadwick, Matthews, & Full Company
- Bows:** ..... Full Company

**What Is 'JTF'?** It's the national 'Junior Theater Festival', which is run by **iTheatrics** of NYC. It has been called the "Olympics of Children's Theater"!



**Where is it?** After one year in Sugar Land, TX in June, '21, JTF is back in Atlanta, GA (thankfully!) in Jan. '22.

**When is it?** After spending **June 24 to 28, 2021** in TX, we will be back to Martin Luther King, Jr. Weekend (**January 13 to 17, 2022**) next year; students will miss school on **Friday, January 14, 2022**).

**What show will MTC perform at JTF '22?** We are taking this Fall Stage '21 production of **Disney's Moana, Jr.**, which we put in hibernation in April '20, to GA in January '22 for the JTF adjudicators. Normally, a student not in the original cast of our JTF show, can join the JTF Cast (as long as they are in Grades 1 - 12) by attending the required rehearsals in the fall prior to our trip.

**When are rehearsals?** Rehearsals are normally in late Dec. / early Jan. (after our NJ performances). The JTF '22 schedule will be posted on the **MTC** Website in late fall.

**What is the cost?** The JTF '21 fee was **\$1,950** per person. We will bill you monthly to spread out the cost. The JTF '22 fee is being finalized now.

**What does that cost include?** Covered by this approximate fee are:

- JTF '22 Registration Fee, **MTC** Event Management Fee, & Rehearsal Time
- Round-Trip Airfare from Philadelphia to Atlanta and back
- Bus Transportation from Atlanta Airport to Renaissance Waverly Hotel & back
- 5 days & 4 nights (Thu., 1.13, Fri., 1.14, Sat., 1.15, Sun., 1.16, & Mon., 1.17)
- Group Breakfasts, Lunches, & Dinners on Friday, Saturday, and Sunday

These arrangements are made for you with our travel agent (**Vacations By Stacy**) so you don't have to do anything but show up at the airport. The rest is handled for you!

**What else do I or my child need to do?** If we have any, you can assist with our fund raising efforts and attend a few information / planning meetings throughout the year.

**What else do I need to know?** **MTC** has attended JTF since 2013, and has won 13 cast (seven) / individual (six) awards in those nine trips. However, it is not about the awards; it's about the experience! You can ask the children (or parents) that have gone. The children perform a condensed 15-minute version of their show in front of theater professional adjudicators (judges). They do so without costumes, props, or sets – just acting, singing, and dancing ('pure theater'). The rest of the Festival is spent attending workshops, concerts, and performances from upcoming Broadway Jr. shows, as well as group meals. And you never know what famous Broadway star you might meet. Teens do not need an adult to travel with them (but pre-teens do).

**Info.:** Watch **JTF** videos on YouTube or on our website ([MoorestownTheaterCom](http://MoorestownTheaterCom))

## **MTC's JTF Productions**

Year	Cast Size		Show Title	Female	Male (Usually)
	A	or B		All-Star	All-Star
2022	22		<i>Disney's Moana, Jr.</i>		
2021	14		* <i>Disney's Beauty And The Beast, Jr.</i>	+Juliet Morgan	Malana Homan-Hepner
2020		30	* <i>Once On This Island, Jr.</i>	Camryn Ragland	Kayman Brown
2019	18		<i>Seussical, Kids</i>	Emma Hong	Lily Sims
2018	24	32	* <i>Disney's The Lion King, Jr.</i>	Indi Ebo	Chance Neal
		45	* <i>Willy Wonka, Jr.</i>	Lily Sims	Chance Neal
			* <i>Hairspray, Jr.</i>	Indi Ebo	Nick Williams
( <b>MTC</b> was allowed to take two Casts in 2018 and 2019.)					
2017	29		* <i>Disney's Peter Pan, Jr.</i>	+Juliet Morgan	+Aren Duffy
2016	26		<i>Shrek, Jr.</i>	Katie Schaeffer	Alex Zambrano
2015	21		* <i>Disney's My Son Pinocchio, Jr.</i>	+Juliet Morgan	+Aren Duffy
2014	24		* <i>Willy Wonka, Jr.</i>	Kylee Miller	Jack Morgan
2013	24		<i>Disney's The Little Mermaid, Jr.</i>	Melissa Tucker	+Aren Duffy

**42 + 267 = 309**

Academy A = 1st- 8th Grade \* "Excellence In Acting" Cast Award Received + Tied for most All-Star Recognitions (Three)  
 Academy B = 1st-12th Grade (JTF All-Stars are chosen by our two iTheatrics adjudicators.)

# MTC Is Honored To Have 11 Casts Receive 13 'Best Of' Performance Awards In 9 Years (Since 2013):



(Annually produced by iTheatrics during Martin Luther King, Jr. Weekend In Atlanta, GA)

## JTF '13



"Outstanding Achievement Award" (Best Actor Award) - Jack Morgan with Blake Ross (Playbill.com Editor) and Drew Cohen (Music Theatre International President)

## JTF '14



"Excellence In Acting Award" - Director Mark Morgan (on behalf of the *Willy Wonka, Jr.* Cast) with Ryan Macauley (Joseph Weinberger Ltd. Music Dir.) & Karma Camp (Broadway Choreographer)

"Excellent Individual Performance By A Male" - Aaren Duffy ('Charlie Bucket') with Ken Cerniglia (Disney Theatricals Dramaturg) and Michael Bobbitt (Adventure Theater Producing Artistic Director)

"Excellent Individual Performance By A Female" - Jordan Budney ('Veruca Salt') with Andrew Keegan Bolger (*Newsies*' 'Crutchie') And Tim Federle (Broadway Author)

## JTF '15



"Excellence In Acting Award" - Director Mark Morgan (on behalf of the *My Son Pinocchio, Jr.* Cast) with Frank DiLella (NY1's OnStage Reporter) and Blake Ross (Playbill.com Editor)

"Broadway Junior Slam Acting Award" - Jordan Budney with Stuart Hendricks (Hal Leonard Australia Director Of Licensing and Hire Department) and Drew Cohen (Music Theatre International President)

## JTF '17



"Excellence In Acting Award" - Director Mark Morgan and Juliet Morgan (on behalf of the *Peter Pan, Jr.* Cast) with Rosemary Newcott (Atlanta's Alliance Theatre Artistic Director) and Jacob Brent ('Mr. Mistoffeels' from Broadway's *Cats*)

## JTF '18



"Excellent Individual Performance By A Female" - Lily Sims ('Mrs. Bucket') with Brad Simmons (Broadway Music Director) & Lotte Wakeham (*Matilda The Musical* Assoc. Dir.)

## JTF '18



"Excellence In Acting Award" - Director Mark Morgan and Selena Bianchi (on behalf of the *Hairspray, Jr.* Cast) with Ken Cerniglia (Disney Theatricals Dramaturg & Literary Manager) & Cindy Ripley (iTheatrics Director of Prof. Development)

## JTF '19



"Inspiration Award" - Kieran Barasch ('Horton') with Director Jen Morris Grasso, and Benj Pasek & Justin Paul (Grammy, Oscar, & Tony Award-Winning Songwriters)

"Excellence In Acting Award" - Director Mark Morgan and Indi Ebo (on behalf of *The Lion King, Jr.* Cast) with Jacob Brent (Choreographer and Performer), and Theresa Squire (*High Fidelity* and *The Lieutenant of Inishmore*)

## JTF '20



"Excellence In Acting Award" - Music Director Carol Ann Murray and Nicholas Williams (on behalf of *Once On This Island, Jr.* Cast) with Luca Padovan and Isabella Russo (Broadway and JTF Performers).

**MTC Is Honored To Have 11 Casts Receive 13  
'Best Of' Performance Awards In 9 Years** (Since 2013):



(Annually produced by iTheatrics during Martin Luther King, Jr. Weekend In Atlanta, GA)

JTF '21



**MTC's *Disney's Beauty And The Beast, Jr.* Cast**

Top Row (from Left to Right): Gianna DiGiovanni, Owen Lawton, Andrew Shaffer, Ryan Garber, Maximus Gorman, Director Mark Morgan

Middle Row (from Left to Right): Vocal Director Carol Ann Murray, Madison Kavalunas, Jenna Vanston, All-Star Juliet Morgan (holding "Excellence In Acting" Award), Rehana Wells, Elise Lawton

Bottom Row (from Left to Right): Nicholas Hehl, Hannah Brodt, All-Star Malana Homan-Hepner, Rocco Ruccolo

Congrats to the Cast for winning this Award (for the fifth year in a row)!

## Cast Bios

### School Abbreviations

MFS = Moorestown Friends School	SVES = South Valley Elementary School
MHS = Moorestown High School	UES = Upper Elementary School
OLGC = Our Lady Of Good Counsel	WAMS = William Allen Middle School

**MTC** productions appear in a ***bold italic*** font. Other theater productions appear in an *italic* font. Age listed is each actor's 'Opening Night' age; School & Grade listed is for the 2021-22 Year.

**GIOVANNA BARCIA** ('Tiara' - 'Black' Cast; Elf Chorus - 'Gold' Cast) • School: **OLGC** • Grade: 7 • Age: 12 • Town: **Burlington Township** • Giovanna is thrilled to be a part of **MTC's** *Elf The Musical*, after just being in *All Together Now!*



This is her eighth show with **MTC** and her ninth show overall. She made her stage debut in *Disney's High School Musical, Jr.* Giovanna has also performed in *Disney's Aladdin, Jr.*, *Disney's Beauty And The Beast, Jr.*, and *Annie, Kids* ('Duffy'), *Schoolhouse Rock Live!* Jr. ('Shulie'), *Disney's Moana, Jr.*, and *Disney's Beauty And The Beast, Jr.* at Music Training Center ('Beast'). She is looking forward to attending JTF with **MTC** in January 2022. She says "Break a Leg!" to the Staff, Cast, and Crew!

**HANNAH BRODT** ('Sam', Adult Chorus) • School: **Harrington MS** • Grade: 8 • Age: 13 • Town: **Mt. Laurel** • Hannah is having a great time and is so excited to be in the Holiday Stage show *Elf The Musical*. She has been in several **MTC** productions since moving to the New Jersey area and is super excited about her second JTF trip with **MTC** in January 2022. Hannah also enjoys swimming and thanks her **Mom** and **Dad** and everyone else whose support makes her time at **MTC** possible. She says "Break A Leg!" to the Cast and she is looking forward to a great start to the Holiday Season with **MTC**.



**SOPHIA CAPPROTTI** ('Tiara' - 'Gold' Cast; Elf Chorus - 'Black' Cast) • School: **Carusi MS** • Grade: 7 • Age: 13 • Town: **Cherry Hill** • Sophia is thrilled to be *Elf The Musical*. Her acting debut was *Dear Edwina* at Carusi Middle School. Sophia enjoys archery, singing in chorus, crocheting, and hanging out with friends! She plays the flute and is a dancer. Sophia says "Break A Leg!" to the entire **Elf** Staff, Cast, and Crew!



**GIANNA DIGIOVANNI** ('Chadwick', Adult Chorus) • School: **Rowan College at Burlington County** • Year: **Freshman** • Age: 19 • Town: **Marlton** • Gianna is thrilled to be in her 21st **MTC** show! Her favorite shows (and roles) include: *Shrek The Musical* ('Elf' and Featured Dancer), *Disney's Beauty And The Beast, Jr.* ('Madame de la Grande Bouche'), *Matilda, Jr.* ('Mrs. Wormwood'), *Frozen, Jr.* ('Queen Iduna'), and *Guys And Dolls, Jr.* ('General Cartwright'). She has travelled with **MTC** to the Junior Theater Festival (JTF) twice. Gianna also made her dance captain debut last month in *All Together Now!* "Break A Leg!" to the Cast!



**ANDIE DRECHSLER** ('Emily Hobbs' - 'Black' Cast; 'Mother', Adult Chorus - 'Gold' Cast) • Town: **Moorestown** • There's something magical about performing near the holidays, especially with so many "buddies" you hold close to your heart. Andie especially loves being on stage with her new husband, **Dan**, who makes every day feels like Christmas. They met at **MTC**, got engaged last Christmas, and were married this past August. Past shows (and roles) include: *Shrek The Musical* ('Dragon'), *Disney's Beauty And The Beast* ('Mrs. Potts'), *Mamma Mia!* ('Rosie'), *A Christmas Story* ('The Mother') opposite her stage hubby - the very talented **Steve Gionta**, *Annie* ('Miss Hannigan'), *The Wizard Of Oz* ('The Wicked Witch'), *A Christmas Carol* ('The Ghost Of Christmas Present'), *Disney's The Little Mermaid* ('Flotsam'), *Mary Poppins* ('Mrs. Banks'), *The Pajama Game* ('Babe'), *Fiddler On The Roof* ('Golde'), *Bye Bye Birdie* ('Mae "Mama" Peterson'), and various beloved roles in *Scenes & Songs II, III, IV & V*, and most recently 'Jenna' from *Waitress* in **MTC's** Performance of *All Together Now!* Like so many of us, *Elf* is Andie's favorite holiday movie and she's thrilled to be singing, she's singing, in this show! "Break A Leg!", one and all...And to all a good night! Happy Holidays!



**Our Cast Loves "Singing Loud For All To Hear!"**

## Our Costume Shop: Rent From Or Volunteer With MTC

Does your School or Theater want to rent our Costumes and / or Sets from any of the following MTC Productions? Or can you help us with your sewing skills?



We have 'Children's Band' Uniforms, '100-Acre Wood' Costumes, 'Under The Sea' Costumes, 'Neverland' Costumes, 'Lion King' Costumes and many more!  
We also need volunteers to help us in our Costume Shop!

Call Carol Ann Murray at 609 / 519-3764 or  
email [Costumes@MoorestownTheaterCompany.org](mailto:Costumes@MoorestownTheaterCompany.org) for more information  
about renting our Costumes and / or Sets, or to volunteer with MTC.

## 2021 Season Advertiser



### For All Your Landscaping Needs

#### Mowing

- Mow, edge, trim & blow lawn service
- Same mowing day every week
- Weekly/Bi-weekly service
- Skipping Available (with 24 hours notice)
- No contracts required
- Free estimates given

#### Landscape Construction

- Hardscaping (retaining walls, pavers, etc.)
- Railroad ties
- Landscape Design
- Seasonal Flowers

#### Landscape Maintenance

- General Cleanups (leaves, weeding, etc.)
- Gutter Cleaning
- Fertilization programs (4-12 applications)
- Aerating, de-thatching, seeding, sod
- Mulch, stone, top soil
- Hedge-trimming, tree-trimming, pruning

#### Irrigation

- Custom Irrigation Installation
- Irrigation Repairs
- Custom Designed Systems
- Zone Additions and Modifications
- Start Ups/Winterizations

#### Snow Removal/Ice Management

- Residential & Commercial

**Call Now For Free Estimate**

**(609) 923-1378**

**[MangoldLandscaping.com](http://MangoldLandscaping.com)**



## Cast Bios

**DAN DRECHSLER** (Macy's Store Manager, 'Fake' Santa, Adult Chorus) • Town:



**Moorestown** • Dan is proud to be a part of this Holiday show, performing with old and new **MTC** friends...even more so because he is once again sharing the stage with his better half, the lovely and exceptionally talented **Andie Drechsler**. Past **MTC** shows (and roles) include: *The Music Man* ('Charlie Cowell'), *Guys And Dolls* ('Rusty Charlie'), *South Pacific* ('Professor'), *Chitty Chitty Bang Bang* ('Boris'), *42nd Street* ('Pat Denning'), *Annie* ('Bundles'), *Mamma Mia!* ('Bill Austin'), *Disney's Beauty And The Beast* (2009 & 2019, 'Cogsworth', *Shrek* ('Papa Ogre', 'Captain Of The Guard'), and *MTI's All Together Now!* as well as multiple appearances in *Scenes & Songs I, II, III* and *V*. To Cast and Crew, "Break A Leg!" and Happy Holidays to all!

**AUDREY EAKINS** (Elf Chorus) • School: Rosa International MS • Grade: 7 • Age: 12 •

Town: **Cherry Hill** • Audrey is very excited to be in her first production with **MTC**. She has performed with CHPAC in their productions of *The Wizard of Oz* and *Frozen, Jr.* When not on stage, Audrey enjoys field hockey, tennis, diving, and baking. She sends a shout-out to the Cast: "Break A Leg!"



**AMANDA FLETCHER** ('Amanda' - 'Gold' Cast; Elf Chorus - 'Black' Cast; Store Elf #2) •



Town: **Moorestown** • Amanda is happy to return to the stage in her first **Moorestown Theater Company** performance. Her prior performances include *Curtains* and *Hello, Dolly!* with Moorestown High School Theater. Amanda has also performed in the Moorestown Summer Recreation Department shows *Little Shop Of Horrors* and *Joseph And The Amazing Technicolor Dreamcoat*. Amanda works as a counselor in the summer theater programs for children. In her spare time, Amanda enjoys spending time with Family, friends, and her dog **Lucy!** She thanks everybody in the Production Staff and her parents for arranging rides to the rehearsals. "Break A Leg!" everyone.

**BARBARA FLETCHER** ('Sarah', 'Emma Van Brocklin', Adult Chorus) • Town: **Moorestown** • Barb is having so much fun in *Elf The Musical*, which is her first show ever! Barb decided to go ahead and give theater a try after watching her daughter **Amanda** perform in several musicals. She enjoys traveling to National Parks, visiting the Jersey Shore, and spending time with Family and friends. Barb thanks her husband for all of his support. She also thanks the Production Staff and says "Break A Leg!" to the entire *Elf* Cast!



**ADDISON GEISLER** ('Charlie' - 'Black' Cast; Elf Chorus - 'Gold' Cast) • School: Rosa



**International MS** • Grade: 7 • Age: 12 • Town: **Cherry Hill** • This is Addison's third **MTC** show. She was recently in *All Together Now!* and also played the title role of 'Annie' in **MTC's Annie, Kids**. Addison attends French Woods Festival of the Performing Arts Camp, participating in multiple different performing programs. She is also active in RIMS's drama and choral programs.

Addison wishes the Cast a great show!

**BRIDGET GIONTA** ('Salvation Army Bellringer') • Town: **Moorestown** • Bridget's Bio appears with the Staff Bios on Page 31.



**STEPHEN GIONTA** ('Walter Hobbs' - 'Black' Cast; 'Fake' Santa, Adult Chorus - 'Gold' Cast) • Town: **Moorestown** • Stephen is happy to be on stage again with



**MTC** after playing 'Shrek' in *Shrek The Musical* this summer and performing in *All Together Now!* last month. He will also be singing with the Philadelphia Men's Chorale with fellow **MTCer Sandhun Mendis** before the **Andrea Bocelli** concert on December 8th at the Wells Fargo Center. As always, Stephen thanks his wife, **Bridget**, for her constant love and support.

**"The 12 Days Of MTC" Will Begin Dec. 13th!**

## Cast Bios

**JIM GUEVARA** ('David Lambert', 'Fake' Santa, Adult Chorus) • Town: Moorestown •



Jim is pleased to be joining the cast of *Elf The Musical* along with his wife Cindy ('Restaurant Waitress'). This is his 10th season with MTC. Previous favorite shows (and roles) include: *Disney's Beauty And The Beast* ('Le Fou'), *Chitty Chitty Bang Bang* ('Boris'), and *Mamma Mia!* ('Harry Bright'). When he isn't on stage, Jim is a physician at CHOP and teaches at Penn. Ho Ho Ho, Merry Christmas!

**ROB HAGERTY** (Security Guard #2, Policeman #2 'Doug', 'Fake' Santa #2, David Lambert, Adult Chorus) • Town: Collingswood • When not performing in local courtrooms in his day job as an attorney, Rob is always excited to perform on the MTC Stage. He has been in such past MTC shows as *Fiddler On The Roof*, *Anything Goes*, *The Pajama Game*, *The Wizard Of Oz*, and *A Christmas Carol, The Musical*. "Break Legs!" everyone!



**TIM HERMAN** ('Santa Claus', 'Fake' Santa, Adult Chorus) • Town: Cinnaminson • Tim



is thrilled to be joining the MTC Family for his second performance having just been in *All Together Now!* Tim is currently the music director at Zion Lutheran Church in Riverside. Favorite shows (and roles) have included *Kiss Me, Kate* ('Fred' / 'Petruchio'), *Forever Plaid* ('Sparky' and 'Smudge'), and *Pippin* ('Leading Player') at Cinnaminson High School long before many of his castmates were born. Tim also spent six seasons as a cast member in *The Lost Colony* in Manteo, NC. He has lived in CA and NYC, where he was a teacher, vocal coach, director, and singer. Tim is very excited / nervous to be back onstage once again.

**LAMONTE JORDAN** ('Buddy' - 'Gold' Cast; Security Guard #1, Policeman #1 'Vinny', 'Fake' Santa, Adult Chorus - 'Black' Cast) • Town: Wrightstown • Lamonte is excited to be in this amazing production of *Elf The Musical!* This is his first MTC production. Lamonte has been in other shows like *The Addams Family* (Uncle Fester), *Sister Act* (Eddie Souther), and many more! In his free time, he enjoys writing and reading and binge watching his favorite TV show "Stranger Things". Lamonte sends special thanks to his **Mom, Dad**, his sister **Alicia**, and his nephew **Josiah!** He hopes you all enjoy the show! "Break A Leg!" everyone! :)))



**EMMIE JUBANYIK** (Elf Chorus) • School: UES • Grade: 4 • Age: 9 • Town: Moorestown • *Elf* is Emmie's first show. She is excited to be part of the Cast. Emmie has a big personality and loves performing for her **Mom, Dad**, and **Brother** at home. She is always singing and dancing, and she gets the entire Family involved in her show. Emmie loves reading and being a part of her gymnastics team.



**MADISON KAVALUNAS** ('Matthews', Adult Chorus) • School: MHS • Grade: 11 • Age: 16 • Town: Moorestown • Madison is excited to be in her 21<sup>st</sup> MTC show and cannot wait to do many more. Outside of theater, she enjoys hiking, hanging out with friends, and collecting houseplants. "Broken Legs!" to the Staff, Cast, and Crew! Madison is looking forward to attending the National Jr. Theater Festival (JTF) with MTC in Atlanta in January '22!



**ALEX KEITH** ('Deb' - 'Black' Cast; Adult Chorus - 'Gold' Cast) • Town: Cherry Hill •



Alex is so excited to be in her third show with MTC. She was previously in *All Together Now!* and *Shrek* ('Dragon'). Alex is a Reading teacher at Voorhees Middle School and directs the Drama Club there. Many thanks to her Family, friends, and the Production Staff.

**EMILY KIESLING** ('Jovie' - 'Gold' Cast; Saleswoman, Adult Chorus - 'Black' Cast) • Town: Chesterfield • Emily is so excited to be in *Elf The Musical* for her first show at **Moorestown Theater Company!** Previous favorite shows (and roles) include: *Sister Act* ('Sister Mary Robert'), and *The Addams Family* ('Wednesday Addams'). She is also a certified Makeup Artist and attended school in NYC. Emily thanks everyone who helped out with this production along with her Family and friends and wishes everyone involved in the production "Good Luck!". :)



## Cast Bios

**SOFIA KRASNOKUTSKY (Elf Chorus) • School: Johnson ES • Grade: 5 • Age: 10 •**



**Town: Cherry Hill** • Long before her interest in theater, Sofia was actively exposed to music: from many hours she spent at the rehearsals and concerts of ensembles and orchestras - to later performances with her ballet class, she was, and continues to be, an active listener and a participant. Being in this production is a dream come true for Sofia.

**CINDY KUO (Restaurant Waitress, Adult Chorus) • Town: Moorestown •** Cindy is happy to announce the franchise of her duck restaurant. The one in China will also feature turkey. We hear it packs a punch!



**CHRISTOPHER LOGAR (Child, Elf Chorus) • School: YALE • Grade: 5 • Age: 10 • Town: Shamong** • Christopher has taken singing and dancing lessons for the last few years. This is his first production and he is so excited to have a small part. He hopes to continue as he is very passionate about theater.



**MARK MORGAN ('Mr. Greenway', MTC Trustee) • Town: Moorestown •** Mark's Bio appears with the Staff Bios on Page 32.



**Carol Ann Murray (Adult Chorus, MTC Trustee) • Town: Moorestown •** Carol Ann's Bio appears with the Staff Bios on Page 33.



**ARNAV REDDY (Elf Chorus) • School: MFS • Grade: 1 • Age: 7 • Town: Moorestown •** Arnav is having so much fun rehearsing for *Elf The Musical!* He has done a couple of MTC musicals (*Oliver!, Jr.* and *Moana, Jr.*) before this one, and he has really enjoyed them. Arnav always dances and sings the *Elf* songs around the house! He is excited for the show to come together, and says "Good Luck!" everyone!



**WILLIAM REID ('Buddy' - 'Black' Cast; Security Guard #1, Policeman #1 'Vinny', 'Fake' Santa, Adult Chorus - 'Gold' Cast) • Town: Mount Laurel •** Will is



SINGING his excitement at the top of his lungs that he gets to portray the iconic 'Buddy The Elf' in this production of *Elf The Musical*. The original movie is one that continues to be on repeat for him every holiday season for the past 18 years (he was six when it came out!). **Will Ferrell** has always been one of

Will (Reid's) favorite comedic geniuses since he learned to laugh, so he is honored to put his spin on this role and offer his own sense of nuance and personality to 'Buddy'. Will recently graduated from Washington College with a B.A. in Theatre (Concentration: Acting) and a B.S. in Environmental Science. He currently works at the Philadelphia Zoo in the education department and auditions for roles on the stage and screen whenever possible. Will recently wrapped filming on his first screen role in the student film *Jane Baker* and can't wait to share the story with everyone! When not working hard on pursuing his careers, Will can be found enjoying his passions of dramaturgy and sound design, binging TV, or obsessing over anime and manga. Selected previous roles include: *Shrek* ('Lord Farquaad'), *The Curious Incident Of The Dog In The Night-Time* ('Christopher Boone'), *Head Over Heels* ('Pythio'), *Eurydice* ('Eurydice's Father'), and *Big Fish* ('Edward Bloom'). Instagram: @the\_william\_reid Twitter: @TheWilliamReid

**Get Ready For Some Really Big Musicals In 2022!**

## Cast Bios

**Nico RENNA (Elf Chorus) • School: Riverbank Charter • Grade: 3 • Age: 8 • Town: Burlington** • Nico is having a blast in *Elf The Musical*, which is his second musical at **MTC**. He was in *Oliver, Jr.* over the summer. Nico loves to make people laugh and wants to be an actor, author, or comedian one day. He thanks the Production Staff, and says "Break A Leg!" to all of his friends in the Cast! Nico sends love to his **Mom, Dad,** and sister **Gabby!**



**MARISA RIVERA ('Jovie' - 'Black' Cast; Adult Chorus - 'Gold' Cast) • Town: Cherry Hill** • This is Marisa's first stage performance since middle school choir, although she has acted in a few episodes of Bravo's *The Singles Project*. Marisa works for Merck in oncology research, however she has kept a passion for music. She thanks **MTC**, the Production Staff, and says "Break A Leg!" to the entire *Elf The Musical* Cast!



**Vasso Sarandoulis (Elf Chorus) • School: Elizabeth Haddon ES • Grade: 5 • Age: 11 • Town: Haddonfield** • Vasso is very outgoing, always happy, friendly, makes quirkiest jokes and gets along with everybody. She is passionate about singing, dancing, and performing. Vasso plays the piano and tennis. She loves her Family, friends, and her two dogs, **Tuco** and **Bowie**. Vasso is very excited to be a returning **MTC** performer. She thanks the Production Staff, and says "Break A Leg!" to all her amazing friends in the Cast! Vasso sends love, hearts, and kisses to her **Mom** and **Dad!**



**Emily Seligman (Elf Chorus) • School: Tatem ES • Grade: 5 • Age: 10 • Town: Haddonfield** • Emily sings with ChildrenSong of New Jersey. She has played 'Miss Honey' in *Matilda, Jr.* Emily is excited to perform with **Moorestown Theater Company** for the second time. Outside of theater, Emily enjoys cooking and playing softball.



**Benjamin Selman ('Michael Hobbs' - 'Black' Cast; Elf Chorus - 'Gold' Cast) • School: SVES • Grade: 3 • Age: 9 • Town: Moorestown** • Ben is very excited to be in his second **MTC** production. His interest in theater has really taken off, thanks in part, to the amazing Production Team, including his Mom ('Miss Jen') as Choreographer, and Cast members at **MTC**, and he is learning so much. Ben also loves gymnastics and is happy to have his brother, **Peter**, and sister, **Caroline**, join him in *Elf The Musical*.



**Caroline Selman (Elf Chorus) • School: Montessori Childrens' House • Grade: PreK • Age: 5 • Town: Moorestown** • As the youngest member of the Cast, Caroline's first show has been full of learning. She (and her Mom, Choreographer **Jen Selman**) have had the help and support needed to have fun and be the best Elf she can be! She hopes to take part in more show's in the future.



**Peter Selman (Elf Chorus) • School: SVES • Grade: 1 • Age: 7 • Town: Moorestown** • Peter has had a blast in his first show with **MTC!** He has learned so much about the work that goes into a production! With his **Mom, Jen**, brother, **Benjamin**, and sister, **Caroline** all part of the show as well, **Peter** is grateful for the whole experience and to **MTC**.



**Cathy Tetreault ('Cathy' - 'Black' Cast; Store Elf #1 - 'Gold' Cast; Elf Chorus) • Town: Southampton** • Cathy is so excited to be a Santa Elf / Store Elf in *Elf The Musical*. You may have seen her as 'Grumpy' in *Shrek* this summer. She also was in many musicals at Seneca High School including *The Wiz*, *Disney's High School Musical*, *Big Fish*, *Disney's Beauty And The Beast*, and *The Addams Family*. Cathy was also in *Godspell* with Pineland Players two years ago. She hopes everyone enjoys the show and has a Happy Holiday!



**Please Remember **MTC** When You Are Making Your Year-End Charitable Contributions!**

## Cast Bios

**Finn Vajapey** ('Charlie' - 'Gold' Cast; Elf Chorus - 'Black' Cast) • School: UES • Grade: 6 • Age: 11 • Town: Moorestown • Finn is excited to portray 'Charlie The Elf' in his second production with MTC and his fourth overall! Previous roles include 'Nipper' / *Oliver!, Jr.* and 'Smee' / *Peter Pan, Jr.* Finn performs with the New Jersey Boychoir and enjoys Roblox with friends, robotics, karate, cats, and creating scavenger hunts. "Break A Leg!" to all!



**Kai Vajapey** ('Michael Hobbs' - 'Gold' Cast; Elf Chorus - 'Black' Cast) • School: WAMS • Grade: 7 • Age: 12 • Town: Moorestown • This is Kai's second production with MTC and fourth overall. He is both excited and honored to play 'Michael Hobbs' in *Elf The Musical!* Previous shows (and roles) include *Oliver!, Jr.* ('Dodger'), *Frozen, Jr.* ('Pabbie'), and *Peter Pan, Jr.* ('Nibs'). Kai is a soloist with the New Jersey Boychoir and enjoys Minecraft, karate, and robotics. "Break A Leg!" to all!



**Stefanie Vajapey** ('Emily Hobbs' - 'Gold' Cast; Mother, Adult Chorus - 'Black' Cast) • Town: Moorestown • Stefanie is excited to return to the stage with MTC in her first show in 25 years! Many thanks to her talented sons (Kai and Finn) and sister who inspired her to get back into theater. In her free time, she enjoys traveling, cooking, TV, and spending time with her Family and cat. Thank you all for the exciting new adventure!



**Patricia Walz** ('Mrs. Claus', Adult Chorus) • Town: Mount Laurel • Patti Lee is excited about being in her first MTC production! A former music teacher and retired pastor from Syracuse, NY, Patti has a long history in theater, played "background" in movies, and was a big bird character for years with the Syracuse Symphony Orchestra. She is currently a pianist at the Moorestown United Methodist Church and accompanies the Garden State Girlchoir.



**Kenzie Ward** (Elf Chorus) • School: Mary Roberts ES • Grade: 2 • Age: 7 • Town: Moorestown • Kenzie is having a blast and getting into the holiday spirit rehearsing for *Elf The Musical*, her second MTC production. She also enjoys soccer, gymnastics, and any arts and crafts. She thanks all of the hard work from the Production Staff and cast-mates to run a successful show! Kenzie sends love to her Family and friends!



**JOCelyn WILLIAMS** ('Deb' - 'Gold' Cast; Adult Chorus - 'Black' Cast) • Town: Moorestown • Jocelyn is thrilled to return to the MTC stage with her husband Rick to perform in their favorite holiday story. She was most recently in *Mamma Mia!*, but has been in many other MTC productions including: *The King And I*, *Disney's Beauty And The Beast*, *Chitty Chitty Bang Bang*, *The Pajama Game*, *Guys And Dolls*, and *42nd Street*. Jocelyn sends best wishes to the Cast and Crew. Special thanks to Rick and her Family for their love and support.



**RICK WILLIAMS** ('Walter Hobbs' - 'Gold' Cast; 'Fake' Santa, Adult Chorus - 'Black' Cast; MTC Trustee) • Town: Moorestown • Rick is happy to be back on the stage with the Moorestown Theater Company with his friends and cast-mates. He is a longtime member and also a Board Trustee. Rick has performed in over 20 productions with MTC since 2007. His very first role was 'The King Of Siam' in *The King And I* (MS '08). His most recent role was as 'Gaston' in *Disney's Beauty And The Beast* (MS '19).



moorestownTheaterCompany.org



December 5, 7, 9, 10, 11, & 12, 2021

## 'Charlotte / Charlie Dennon' Cast Bios

**JILL FALLOWS MACALUSO ('Charlotte Dennon' 12/7, Moorestown School Board) •**



**Town: Moorestown** • Jill's last role was the valley girl lead in Palmyra High School's 1994 production of *Help! I'm Trapped In A High School*. Jill loves crafts and gardening and coaches field hockey. She sends a special thank you to her husband **Pete**, her three daughters - **Nola, Callie** and **Margo** - and her **Mom**. She wishes the Cast and Crew the best of luck and everyone in the community happy holidays!

**NICOLE GILLESPIE ('Charlotte Dennon' 12/11, Moorestown Mayor) • Town: Moorestown** • Returning to the stage for the first time after more than 40 years, Nicole is thrilled to join **MTC** in *Elf The Musical*, even though she has no musical ability whatsoever. She is extremely grateful to be surrounded by the talented Cast and Production Staff and says "Break A Leg!" to everyone!



**QUINTON LAW ('Charlie Dennon' 12/9, Moorestown Council Member) • Town: Moorestown**



• Quinton was appointed to Township Council early in 2021 and was just elected to fulfill a four-year term last month. He is a staffer in NJ Senator Cory Booker's Office where he serves on the Senator's casework management and outreach teams. Quinton is also a founding member of the Moorestown Alumni for Racial Equity and Inclusion (MAREI). He is a graduate of Bryant University and holds a degree in Economics with a concentration in Public Policy. Quinton is a third generation Moorestonian who grew up on Farmdale Road and graduated from MHS in 2015. He currently lives in the Lenola section and enjoys listening to podcasts and watching sports with friends in his free time. He says "Good Luck!" to the Staff, Cast, and Crew.

**CHERYL MAKOPOULOS ('Charlotte Dennon' 12/10, Moorestown School Board) •**

**Town: Moorestown** • Cheryl is looking forward to making an appearance in a **MTC** production. This will be her first time on stage after giving up an opportunity to play 'Snow White' in the school play when she was five years old. Cheryl is a full-time working mom of two boys and two extra large canines. In her spare time, she likes to run and spend time with her Family. She thanks the Production Staff for inviting her to participate and says "Break A Leg!" to the entire Cast!



**MARK VILLANUEVA ('Charlie Dennon' 12/12, Moorestown School Board) • Town:**



**Moorestown** • This is Mark's first return to the stage since performing in the WAMS production of *The Pig's Plot* circa 1986. Ever grateful to **MTC** for the opportunity to participate in *Elf The Musical*, Mark sends love to wife **Kate** and kids **Liam, Paige, Reese**, and **Hugh** (hopefully all on Santa's "nice" list)!

**JAKE VAN DYKEN ('Charlie Dennon' 12/5, Moorestown Council Member) • Town:**

**Moorestown** • Jake is excited to be part of this *Elf The Musical* production. Previously, Jake did some film work in High School (short films) and Theater in College (think "Shakespeare" with a Jersey accent). This will be his first acting job in over twenty years. When he is not acting, he plays the part of a lawyer and Councilman in Moorestown. Jake thanks his wife and two daughters for their love and support!



**MTC's Staff, Cast, and Crew Of**  
***Elf The Musical***

**Thank Our Moorestown Elected Officials**  
**For Coming Out To 'Play' With Us!**

## Staff Bios

**BEVERLY BENNETT (Founding MTC Trustee, Music Director, Assistant Conductor) •**



**Town: Mount Laurel** • Bev has been a music director, teacher, and performer her entire adult life. She's trained marching bands and choral groups, accompanied the Woodbury HS Choir (20 years), given piano lessons, and sung with the Mendelssohn Club of Philadelphia (30 years). She has been involved as a Trustee, Music Director, and Accompanist with MTC since she, her daughter **Carol Ann Murray**, and her son-in-law **Mark Morgan**, founded the company in 2003. Due to an accident in 2006, she sadly has a new appreciation for the phrase "Break A Leg!". She thanks everyone for their thoughts and prayers since her husband **Ross** passed away in 2018.

**ANNETTE DE ROSA (MTC Trustee / Secretary, Administrative Assistant, Assistant Producer, Program Cover Designer, Program Editor, Ticket Manager) •**

**Town: Moorestown** • Annette has been a part of MTC since Show #1 in 2003. A proud Drexel University alum, she worked full-time for MTC from June 21, 2010 to December 31, 2017. She is now the "Woman Behind The Curtain" overseeing registrations, managing tickets, creating Program Books, designing Program Book covers, and much more. "Break Legs!" everyone.



**BRIDGET GIONTA ('Salvation Army Woman', Hair and Wigs Designer) • Town: Moorestown •**



Bridget has performed on-stage in many MTC productions (*Annie*, *Disney's Mary Poppins*, *The Pajama Game*, and *Disney's The Little Mermaid*, among others), and she is thrilled to make a cameo performance in this holiday show. Her true talent lies with the preparation and maintenance of our Cast members' hair and wigs! She sends her love to her **daughters** and

**Stephen** ('Walter Hobbs', 'Black' Cast) for their constant encouragement and support. Now if she can just figure out a way to include her fake cigarette!

**JACK MORGAN (Creative Director, Tech Director, Sound Designer, & Webmaster) •**

**Town: Moorestown** • Jack has made many appearances on the MTC Stage since our debut production of 'Annie' (MS '03), but he returned in July in *Footloose* (RS '21, as 'Rev. Shaw Moore') and last August in *Godspell* (RS '20) after not being on-stage since *Fiddler On The Roof* (MS '14). (He also jumped in a the last minute to play 'Garry Quarky' in our *The Big One-Oh!* I(SS '20).



Jack was very excited to make his directing debut with *School House Rock Live!, Jr.* in August. He was the first MTC performer in our history to win an individual award ('Outstanding Achievement Award') at the 2013 national Jr. Theater Festival (JTF). At JTF '14, he was also named an All-Star for playing the title character in *Willy Wonka, Jr.*, which was the first of seven times (in nine trips) that MTC's Cast won an 'Excellence In Acting' Award (including in June, when he served as our JTF Technical Director!). Jack attended Temple University, is a website designer, and is currently serving as MTC's Creative Director, where is working on our marketing, as well as redesigning our website. He wishes the Cast of *Elf The Musical* many 'Broken Legs!', and thanks the Production Staff, including his Parents, Director **Mark Morgan** and Vocal Director / Costume Designer **Carol Ann Murray!**

**JEN SELMAN (Choreographer) • Town: Moorestown •**



Elf is Jennifer's first show with MTC and her first experience choreographing. She has had the pleasure of diving right in with the help and support of the amazing Cast and other Production Team Staff. Jen is so grateful for the support of her incredible husband, **Jeff** and their three children who are in the show as well.

**All Of Our Staff, Cast, And Crew Of**

***Elf The Musical***

**Hope That You And Your Loved Ones**

**Have A Wonderful (And Safe) Holiday Season!**

## Staff Bios

**MARK MORGAN** (Founding **MTC** Trustee, Producing Artistic Director, Director, Program Editor, 'Mr. Greenway') • Town: Moorestown • Mark loves to go to work everyday (especially in **MTC's** Performing Arts Studio on Main Street)! He and his wife **Carol Ann Murray** (Founding **MTC** Trustee, Producer, Managing Director, Costume & Props Designer), and her mother, **Beverly Bennett** (Founding **MTC** Trustee, Music Director), founded the **Moorestown Theater Company** in 2003, and can't believe that **MTC** is closing its 19th Season and its 194<sup>th</sup> Production! Of these 194 shows, Mark has directed 129 of them (including **Annie**, **MTC's** 150th and Mark's 100th for MS '18)! He is thrilled to run this multi award-winning organization, after starting his community theater career WAY back in 1981 at Upper Darby (PA) Summer Stage, where *30 Rock's* and *Mean Girls' Tina Fey* is a fellow alum (see photo below)! He will open **MTC's** 2022 Season by directing **Moana, Jr.** in January at the national Jr. Theater Festival (JTF) in Atlanta, GA! **Elf The Musical** is his 282<sup>nd</sup> production! In 1999, he brought all-ages musicals to Moorestown and directed the first two (*The Music Man* and *Bye Bye Birdie*) for MoorArts (then MAAC). Mark is so proud of **MTC's Beauty And The Beast, Jr.** (JTF '21), **Once On This Island, Jr.** (JTF '20), **The Lion King, Jr.** (JTF '19), **Hairspray, Jr.** (JTF '18), **Peter Pan, Jr.** (JTF '17), **My Son Pinocchio, Jr.** (JTF '15), and **Willy Wonka, Jr.** (JTF '14) Casts, all seven of which earned "Excellence In Acting" Awards under his and Carol Ann's direction at JTF in January of those years (except for this year, which was in Sugar Land, TX in June)! He is also pleased that **MTC** won two awards for **Hairspray, Jr.** at the Eastern States Theater Association Festival (ESTAFest) in Wilmington, DE in April '17 ("Outstanding Production Showcase" and "Outstanding Achievement In Choreography") and he had hoped to go back to ESTAFest '19, but while **MTC** was chosen to represent the state of NJ (!), it was not allowed to 'cut down' **Mamma Mia!** Mark was honored to direct a 'pilot' production (at Disney Theatricals' request!) of **Mary Poppins, Jr.** in May 2016 (plus five other 'pilots'), and also directed **MTC's** first World Premiere of **Magic Tree House: A Ghost Tale For Mr. Dickens, Jr.** in December 2014. In August '17, he directed **MTC's** Delaware Valley Premiere of **West Side Story: School Edition**. Some favorite roles / shows include 'Dream Curl' / **Oklahoma!** (where he proposed post-show on-stage to **Carol Ann!**), 'Jean Shepherd' / Narrator / **A Christmas Story**, **The Musical** (HS '18), the 'Wizard' in **The Wizard Of Oz** (MS '17, his first 'Title Character!'), 'Rooster' / **Annie** (thrice, including MS '18), 'Will Parker' / **Oklahoma!** (twice, including MS '05), 'Bobby Child' / **Crazy For You**, 'Nathan Detroit' / **Guys & Dolls**, 'Tulsa' / **Gypsy**, 'Jeff Douglas' / **Brigadoon**, 'Big Daddy' / **Sweet Charity**, 'Prince Dauntless' / **Once Upon A Mattress**, 'Sir Evelyn Oakleigh' / **Anything Goes** (2S '14), 'Prez' / **The Pajama Game**, 'Dick' / **Dames At Sea**, and 'Monsieur D'Arque' / **Disney's Beauty And The Beast** (MS '09 & '19). He has his Bachelors and Masters Degrees from Temple University. Mark received the **Burlington County Regional Chamber of Commerce's** 'Chairman's Award of Excellence' in 2010 for his volunteer work from '06 to '14 as Moorestown Business Association President. **MTC** received that Chamber's 'Community Enrichment Award' in April '16. Mark teaches **MTC's** Audition Coaching & Acting Classes. He and Carol Ann are the parents of **Chaz** (32, Co-Owner of 'Hungry Dog Grill' in Delran), **Jack** (25, Creative Director, Tech Director, Sound Designer, and *Les Mis* and *Newsies* Soloist), & **Juliet** (18, Temple University Freshman). Mark thanks his Mother-In-Law **Bev Bennett** (Music Director) for all she does for **MTC** and his Family. He is also glad that his parents, **Joe & Laurie Morgan**, can see **MTC's** success. Mark says "Break Legs!" to the **Elf The Musical** Staff, Cast, & Crew!

## The **MTC** & Tina Fey Connection

**Mark** and **Juliet Morgan** met the two most famous people from Mark's first theater home, Upper Darby (PA) Summer Stage in August 2014: Fellow Alum **Tina Fey** and Founder (& Mark's Mentor) **Harry Dietzler!** Thanks UDSS!!





## Staff Bios

**CAROL ANN MURRAY** (Founding MTC Trustee, Managing Director, Vocal Director, Producer, Costume Designer, & Conductor) • Town: Moorestown • Carol Ann founded MTC with husband **Mark Morgan** and mother, **Beverly Bennett** in 2003. This is her 227<sup>th</sup> production, and she has been Vocal Director for 91 of them (including *Scenes & Songs V* in Oct. '18, where she also made her directing debut with *The Play That Goes Wrong!*)! Moorestonians have seen her as 'Donna' / *Mamma Mia!* (2S '19), 'Miss Hannigan' / *Annie* (MS '18 & MTC's 150th Show!) 'The Ghost of Christmas Present' / *A Christmas Carol* (FS '16), 'Ursula' / *The Little Mermaid* (MS '16), 'Mrs. Banks' / *Mary Poppins* (MS '15), 'Bonnie' / *Anything Goes* (2S '14), 'Golde' / *Fiddler On The Roof* (MS '14), 'Muzzy Van Hossmere' / *Thoroughly Modern Millie* (2S '13), 'Mrs. MacAfee' / *Bye, Bye Birdie* (MS '13 & '00), 'Maggie Jones' / *42nd Street* (2S '12), 'Ethel McCormack' & 'Vi Moore' / *Footloose* (MS '12 & MS '04, respectively), 'Nellie Forbush' / *South Pacific* (2S '11), 'Truly Scrumptious' / *Chitty Chitty Bang Bang* (MS '11), 'Sara Brown' / *Guys & Dolls* (2S '10), 'Mrs. Paroo' & 'Marian Paroo' / *The Music Man* (MS '10 & MA '99, respectively), 'Mrs. Potts' / *Beauty & The Beast* (MS '09), 'Anna Leonowens' / *The King & I* (MS '08), and 'Ado Annie Carnes' / *Oklahoma!* (MS '05). Another favorite role / show was 'Laurey Williams' / *Oklahoma!*, where she accepted **Mark's** on-stage proposal! Other favorite roles / shows: 'Babe Williams' / *The Pajama Game* (while pregnant with **Juliet!**), 'Julie Jordan' & 'Carrie Pipperidge' / *Carousel*, and 'Joanne' / *Godspell*. A Trenton State alumna, Carol Ann started working full-time for MTC on Sept. 1, 2013. She teaches MTC's Private Voice Lessons, and oversees MTC's Development, Music, Costumes, and Props Departments. Carol Ann and Mark are the proud parents of **Chaz** (32, Co-Owner of 'Hungry Dog Grill' in Delran), **Jack** (25, Creative Director, Tech Director, Sound Designer, and *Les Mis* and *Newsies* Soloist), and **Juliet** (18, Temple University Freshman). She thanks her Mother, **Beverly Bennett** (Music Director) for all she does for MTC & her Family, misses her late Step-Father **Ross Bennett**, and dedicates this show to her musical theater-loving Dad, **Bob Murray**, who would love seeing MTC's success! She sends "Broken Legs!" to the Staff, Cast, and Crew of *Elf The Musical!*

## The MTC & Kevin Chamberlin Connection



MTC Staff (**Annette De Rosa**, **Mark Morgan**, & **Carol Ann Murray**) met the Moorestown native (a 3-time Tony Nominee, including for 'Uncle Fester', 'Bertram' in Disney's *Jessie*, & recently the 'Wizard' in Broadway's *Wicked*) at our Seventh Extrava-Gala Weekend (October 16-18, 2015).

MTC was 15-strong (right) in NYC on Mother's Day (May 8) 2016 to see Kevin (top center) in the final performance of his last Broadway Musical (before *Wicked*), *Disaster - The Musical*. He, and the show, were great!!



A busload of MTCers (52-strong!) road tripped to NYC on Sunday, January 27, 2019 to see Kevin on stage in another Broadway show (his 10th!). Before the show, Kevin was kind enough to give us a theater tour, and then he spoke with us and answered questions for an hour! Oh, and as usual, Kevin was great (as 'The Wizard' in *Wicked*)!

## 2021 Season Advertisers



From design consulting to new construction we specialize in:

Creative Designs

Attention to Detail

Sustainable /  
Green Alternatives

Affordable Solutions

Residential

Commercial

**bunn**  
**architecture**

Kimberly Bunn AIA, LEEDap

Moorestown, NJ

856-234-7367

email: [info@bunnarch.com](mailto:info@bunnarch.com)

[www.bunnarch.com](http://www.bunnarch.com)

**CAMDEN  
PRINTWORKS**  
LOVES MOORESTOWN THEATER COMPANY!

CUSTOM T-SHIRTS and more for  
SCHOOL, CHURCH, THEATER, SPORTS, you name it!

**(856) 365-1424**  
**WWW.CAMDENPRINTWORKS.NET**  
printed with **PRIDE** in Camden, New Jersey

The logo for Camden Printworks is a circular emblem. It features a white hammer and a white wrench crossed at their handles, set against a dark background. The emblem is surrounded by a thick orange border with a segmented, gear-like appearance.

# MTC Is Honored To Have Received 41 'Best Of' Publication / Organization Awards Since 2007:



Delaware Valley Regional  
Planning Commission's  
Classic Towns  
People's Choice Contest Winner  
"Best Theater" 2018



(Editors' Choice)  
"Best Summer  
Fun For  
The Family"



(Readers' Poll)  
"Best  
Community  
Theater"



(Readers' Poll)  
"Best  
Community  
Theater"



(Editors' Choice)  
"Best  
Boredom Buster  
For Kids"



(Readers' Poll)  
"Best Summer Camp"



(Readers' Poll)  
"Best Summer  
Camp"



(Readers' Poll)  
"Best Community  
Theater"



(Editors' Choice)  
"Best Summer  
Camp"



(Readers' Poll)  
"Best  
Family Fun"



(Readers' Poll)  
"Best Community  
Theater"



Suburban Family  
(Readers' Poll)  
"Best Family Theater"  
2011 & 2012



Suburban Family  
(Editor's Choice)  
"Best Children's  
Theater" / 2013 & 2014



Suburban Family  
(Editor's Choice)  
"Best Family-Friendly Theater"  
2015, 2016, & 2017



Suburban Family  
(Readers' Poll)  
"Best Theater  
Company" / 2020



(Editors' Choice) "Best  
Place To Enjoy The Arts"



(Editors' Choice) "Best  
Theater Company"



(Readers' Choice) "Best  
Theater Company"



BCRCC Community  
Enrichment Award 2016



(Readers' Poll)  
"Best Children's  
Entertainment"



Southern New Jersey  
Business People  
(Readers' Poll)  
"Top Non Profit"  
2014 & 2016



"Best After-School Program"  
"Best Extracurricular, Enrichment  
Program & Camp"  
"Best School Break &  
Summer Program or Camp"  
"Best Performance Theater for  
Young Audiences"  
"One Of The Best Dance Programs"  
"One Of The Best Performance  
Art Programs"



(Readers' Poll)  
"One Of The Best  
Performing Arts  
Center / Venue"



(Readers' Poll)  
"One Of The Best  
Children's Camp"



(Readers' Poll)  
"Best Performing  
Arts Center / Theatre"



# Moorestown Theater Company

*Transforming Lives Since 2003!*

## (It Was A Great) 2021 Season!

PERFORMING ARTS  
STUDIO CLASSES  
Winter • Spring • Fall  
(Multi-Week Sessions!)



Singing • Acting • Dancing

WINTER STAGE  
(Grades 1 - 12)



Apr. 28, May 7 & 8

COUNSEL STAGE  
(OLGC Grades 5 - 8)



May 20 - 23

SPRING STAGE  
(Grades 1 - 12)



Jun. 11 - 13  
*Our JTF '21 Show!*

JR. THEATER FESTIVAL  
(Sugar Land, TX)



June 24 - 28

MAIN STAGE  
(Ages 6 & Up)



August 18 - 21 & 27 - 29

RISING STAGE  
(Ages 17 - 29)



July 27 - 31

## SUMMER STAGE (Award-Winning Musical Theater Camp)

SESSION I  
Jun. 21 - July 2  
(Ages 6 - 14)



June 30 - July 2

SESSION II  
July 6 - 23  
(Ages 8 - 18)



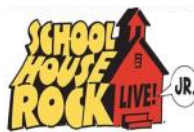
July 20 - 23

SESSION III  
July 26 - Aug. 13  
(Ages 6 - 18)



August 10 - 13

SESSION IV  
August 16 - 27  
(Ages 6 - 18)



August 24 - 27

PERFORMING ARTS  
STUDIO CLASSES  
10-Week Fall Session



Singing • Acting • Dancing

FALL STAGE  
(Grades 1 - 12)



Oct. 23 & 24

MTI FUNDRAISER  
(Ages 18 & Up)



Nov. 12 - 14

HOLIDAY STAGE  
(Ages 6 & Up)



Dec. 3 - 5 & 10 - 12

**MoorestownTheaterCompany.org**  
info@MoorestownTheaterCompany.org • (856) 778-8357  
5 W. Main Street • Moorestown, NJ 08057



Jr. Theater Festival  
'Excellence In Acting'  
'14, '15, '17, '18, '19, & '20